

Worklist: 6547

<u>LAB CASE</u>	<u>ITEM</u>	<u>ITEM TYPE</u>	<u>DESCRIPTION</u>	
M2023-3011	1	BCK	AM 28 Blood Multi-Drug Quant Panel 1 by LC-QQQ	
M2023-4028	3	BCK	AM 28 Blood Multi-Drug Quant Panel 1 by LC-QQQ	
M2023-4210	2	BCK	AM 28 Blood Multi-Drug Quant Panel 1 by LC-QQQ	
M2023-4214	1	BCK	AM 28 Blood Multi-Drug Quant Panel 1 by LC-QQQ	
M2023-4218	3	BCK	AM 28 Blood Multi-Drug Quant Panel 1 by LC-QQQ	
M2023-4257	1	BCK	AM 28 Blood Multi-Drug Quant Panel 1 by LC-QQQ	
M2023-4288	2	BCK	AM 28 Blood Multi-Drug Quant Panel 1 by LC-QQQ	
M2023-4350	2	BCK	AM 28 Blood Multi-Drug Quant Panel 1 by LC-QQQ	
P2023-2841	1	BCK	AM 28 Blood Multi-Drug Quant Panel 1 by LC-QQQ	
P2023-2914	1	BCK	AM 28 Blood Multi-Drug Quant Panel 1 by LC-QQQ	
P2023-3097	1	BCK	AM 28 Blood Multi-Drug Quant Panel 1 by LC-QQQ	
P2023-3114	2	BCK	AM 28 Blood Multi-Drug Quant Panel 1 by LC-QQQ	
P2023-3123	2	BCK	AM 28 Blood Multi-Drug Quant Panel 1 by LC-QQQ	
P2023-3132	1	BCK	AM 28 Blood Multi-Drug Quant Panel 1 by LC-QQQ	
P2023-3133	1	BCK	AM 28 Blood Multi-Drug Quant Panel 1 by LC-QQQ	
P2023-3186	1	BCK	AM 28 Blood Multi-Drug Quant Panel 1 by LC-QQQ	
P2023-3191	1	BCK	AM 28 Blood Multi-Drug Quant Panel 1 by LC-QQQ	
P2023-3215	1	BCK	AM 28 Blood Multi-Drug Quant Panel 1 by LC-QQQ	
P2023-3219	1	BCK	AM 28 Blood Multi-Drug Quant Panel 1 by LC-QQQ	

AM# 28: Multi-Drug Quantitation by LC-MS/MS

Extraction Date: 10/25/2023

Analyst: Celena Shrum

Plate lot#: 230707

Plate Retest Date: 01/07/2024

Mobile phase A: 5mM Amm Form + 0.01% FA Instant Buffer I

Mobile phase B: 0.01% Formic Acid in MeOH Ethyl Acetate LC Methanol

Blank Blood Lot: Lampire 23E52981

Column: Phenomenex Phenyl Hexyl (4.6x50mm, 2.6um)

LCMS-QQQ ID: 069901

Pre-Analytic:

- 1. Check levels of mobile phases and needle wash refill as needed. Ensure waste is not full.
- 2. Ensure correct column is installed and begin mobile phase flow allow to equilibrate ~ 30 minutes.

Analytic:

- 1. Remove standards, plate, controls, and samples from cold storage. Allow to reach room temperature.
- 2. Using a calibrated pipette, pipette **250µL blood** into the appropriate wells of the analytical (standards) plate.
Pipette ID: 16
- 3. Pipette **250µL of 0.5 M ammonium hydroxide** in wells of analytical plate.
- 4. Place on shaking incubator at ambient temp., 900rpm for 15 minutes.
- 5. Transfer **300L of blood+base** mixture to corresponding wells of SLE+ plate.
- 6. Apply positive pressure for approx. 10-15 seconds (or until no liquid remains on top of sorbent).
(Load at 85-100 PSI- Selector to the right). Manifold ID: 067104
- 7. Wait 5 minutes.
- 8. Add **900uL ethyl acetate**.
- 9. Wait 5 minutes.
- 10. Apply positive pressure for approx. 15 seconds. *(10-15 PSI- Selector to the left).*
- 11. Add **900uL ethyl acetate**.
- 12. Wait 5 minutes.
- 13. Apply positive pressure for approx. 15 seconds. *(10-15 PSI- Selector to the left).*
- 14. Remove plate containing eluate.
- 15. Add 50µl of 1% HCl in MeOH to all wells in the run and place ACT cover on top of plate prior to drying.
- 16. Place on SPE Dry and evaporate to dryness at approx. 35°C.
- 17. Reconstitute in **100µL 20% LC MeOH** and heat seal plate with foil. Place in autosampler and run worklist.

Post-Analytic

- 1. Create batch and process data.
- 2. Make necessary changes to integration limits
- 3. Integration linear and R² values ≥0.98 for each analyte.
- 4. For unknown samples and controls: response ratio within 20% of average of controls and standards, RT within +/- 5% (tramadol RT +/-2%), S/N for primary transition >10 and secondary transitions >5.
- 5. Did all QCs pass for each analyte? Yes, see comments Add Control data to QC tracking spreadsheet.
- 6. Central File Packet to include: LIMS Worklist, Method Checklist, Calibration and Control Reports.

Comments: Cal 3 was reinjected due to the retention time shifting for some compounds/ISTDs. Compounds included in this central file: Alpha-hydroxyalprazolam, alprazolam, amphetamine, bupropion, diazepam, EDDP, fentanyl, fluorofentanyl, fluoxetine, hydroxyzine, methadone, methamphetamine, nordiazepam, norfentanyl, phentermine.

Curve Limits:

Amphetamine 5-250 -- calibrators 7 and 8 dropped due to accuracy

Fentanyl 0.5-50 -- calibrator 8 dropped due to accuracy

Phentermine: 5-500 -- calibrator 8 dropped due to accuracy

	1	2	3	4	5	6	7	8	9	10	11	12
A									M2023-4028-3	P2023-2914-1	P2023-3215-1	IS + Cal. 8
B									M2023-4210-2	P2023-3097-1	P2023-3219-1	IS + Cal. 7
C									M2023-4214-1	P2023-3114-2	Neg Ctrl	IS + Cal. 6
D									M2023-4218-3	P2023-3123-2	IS + QC_2	IS + Cal. 5
E									M2023-4257-1	P2023-3132-1	IS + QC_4	IS + Cal. 4
F									M2023-4288-2	P2023-3133-1	IS + QC_3	IS + Cal. 3
G									M2023-4350-2	P2023-3186-1	IS + QC_2	IS + Cal. 2
H								M2023-3011-1	P2023-2841-1	P2023-3191-1	IS + QC_1	IS + Cal. 1



AM #28 Multi-Drug Quant. Results

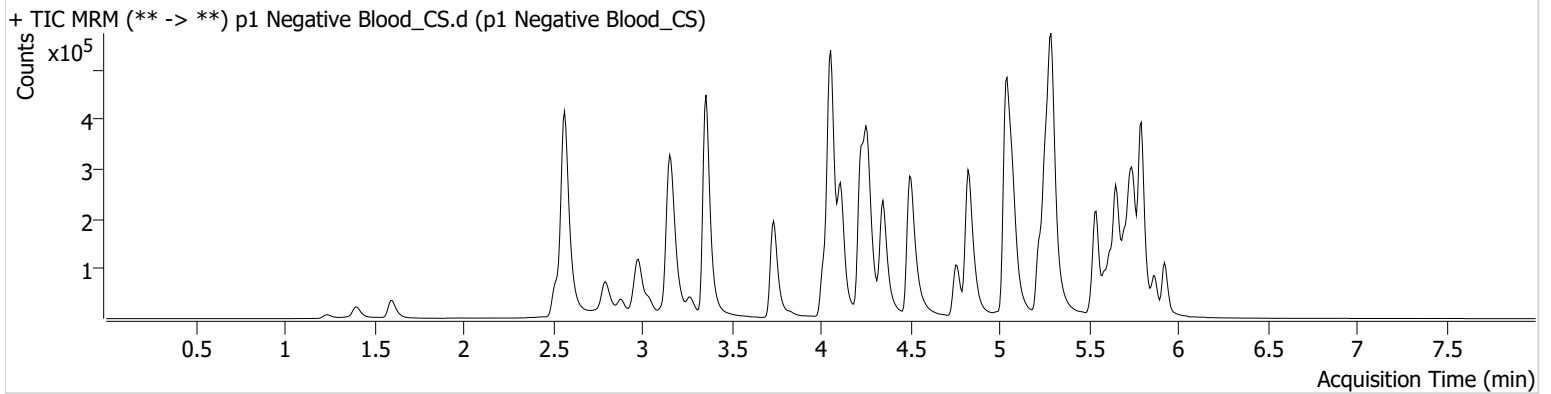
Batch results D:\MassHunter\Data\2023\AM 27 28\102523 AM 27 28 TS CS\QuantResults\AM 28_CS Cases.batch.bin
Calibration Last Update 10/27/2023 11:36:07 AM

Instrument Falco (069901)
Type Sample
Acq. Method AM 28 MDQ P1.m
Sample Position P2-C11
Injection Volume 2
Acq. Date-Time 10/26/2023 3:13:44 AM
Sample Info.

Data File p1 Negative Blood_CS.d
Sample p1 Negative Blood_CS
Operator Celena Shrum
Comment

Only drugs and concentrations listed on the laboratory report itself are appropriate to be used for interpretation purposes. Any drugs or values included in the notes but not included on the report are used by laboratory personnel to make determinations/reach conclusions within the confines of the methods.

Sample Chromatogram





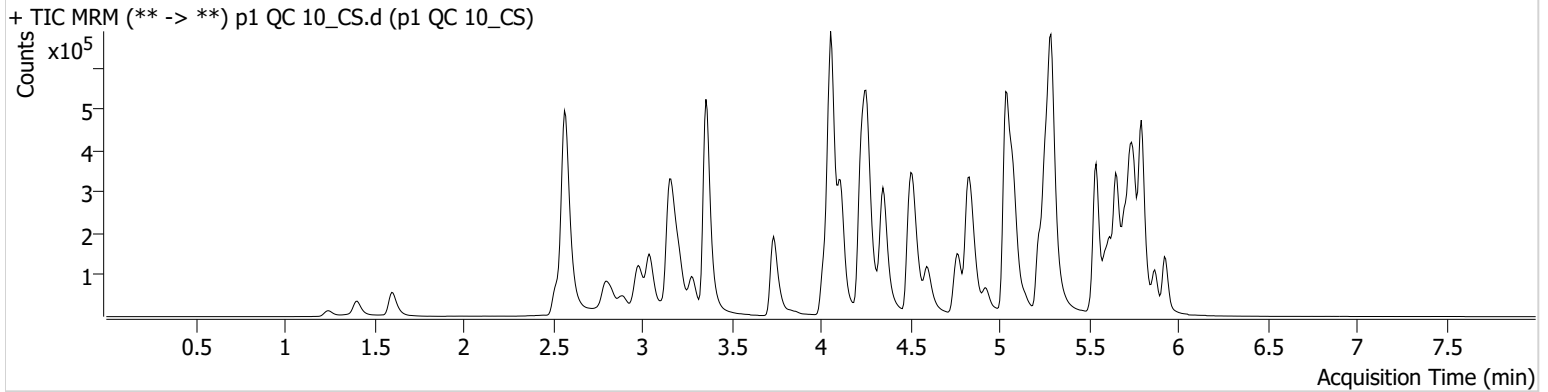
AM #28 Multi-Drug Quant. Results

Batch results D:\MassHunter\Data\2023\AM 27 28\102523 AM 27 28 TS CS\QuantResults\AM 28_CS Cases.batch.bin
Calibration Last Update 10/27/2023 11:36:07 AM

Instrument Falco (069901) **Data File** p1 QC 10_CS.d
Type QC **Sample** p1 QC 10_CS
Acq. Method AM 28 MDQ P1.m **Operator** Celena Shrum
Sample Position P2-H11 **Comment**
Injection Volume 2
Acq. Date-Time 10/26/2023 2:09:57 AM
Sample Info.

Only drugs and concentrations listed on the laboratory report itself are appropriate to be used for interpretation purposes. Any drugs or values included in the notes but not included on the report are used by laboratory personnel to make determinations/reach conclusions within the confines of the methods.

Sample Chromatogram



Name	RT	Resp.	S/N	Ratio	S/N	ISTD Resp.	Final Conc.
a-hydroxyalprazolam	5.683	18005	71.22	81.8	347.77	93176	9.6426 ng/ml
Alprazolam	5.760	63304	267.44	128.5	440.48	281879	9.8061 ng/ml
Amphetamine	3.043	237176	1096.43	39.6	1077.37	166666	10.4454 ng/ml
Bupropion	4.779	116529	458.32	72.2	498.88	315200	10.2108 ng/ml
Diazepam	5.932	46699	982.08	88.4	1340.55	215356	10.6653 ng/ml
EDDP	5.262	102141	151.80	47.2	171.42	605714	10.6051 ng/ml
Fentanyl	5.089	5811	70.09	94.3	7277.51	439950	0.9981 ng/ml
Fluorofentanyl	5.143	23507	174.66	34.9	719.38	5136	0.9255 ng/ml
Fluoxetine	5.705	38450	40884.63	7.4	1721.56	131086	10.3077 ng/ml
Hydroxyzine	5.702	46050	770.55	70.4	491.18	280630	9.4687 ng/ml
Methadone	5.657	151278	5049.05	40.5	1978.32	491310	9.5821 ng/ml
Methamphetamine	3.218	131482	243.14	39.8	321.20	865250	10.4073 ng/ml
Nordiazepam	5.878	41104	646.11	69.0	130.22	138996	10.5259 ng/ml
Norfentanyl	4.078	25337	45.69	31.6	179.18	950697	0.9782 ng/ml
Phentermine	3.773	30805	124.34	7.8	24.59	587042	10.0738 ng/ml



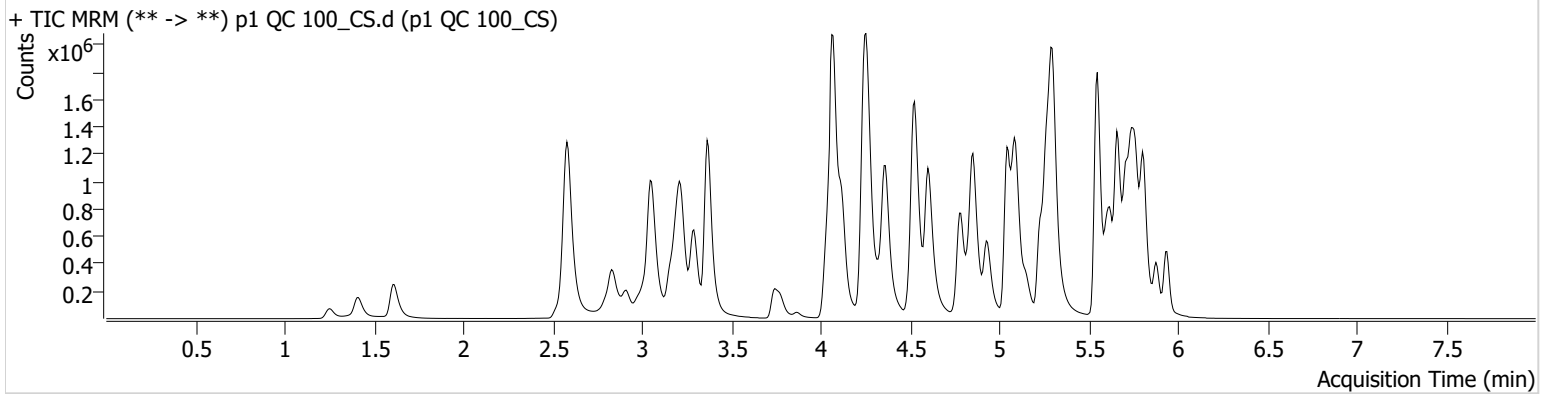
AM #28 Multi-Drug Quant. Results

Batch results D:\MassHunter\Data\2023\AM 27 28\102523 AM 27 28 TS CS\QuantResults\AM 28_CS Cases.batch.bin
Calibration Last Update 10/27/2023 11:36:07 AM

Instrument Falco (069901) Data File p1 QC 100_CS.d
Type QC Sample p1 QC 100_CS
Acq. Method AM 28 MDQ P1.m Operator Celena Shrum
Sample Position P2-G11 Comment
Injection Volume 2
Acq. Date-Time 10/26/2023 10:44:27 AM
Sample Info.

Only drugs and concentrations listed on the laboratory report itself are appropriate to be used for interpretation purposes. Any drugs or values included in the notes but not included on the report are used by laboratory personnel to make determinations/reach conclusions within the confines of the methods.

Sample Chromatogram



Name	RT	Resp.	S/N	Ratio	S/N	ISTD Resp.	Final Conc.
a-hydroxyalprazolam	5.683	159058	771.12	81.7	368.27	79010	95.0098 ng/ml
Alprazolam	5.760	639364	1945.27	122.7	1908.21	252187	101.0045 ng/ml
Amphetamine	3.056	2391308	1643.41	38.2	7526.65	183261	101.7827 ng/ml
Bupropion	4.786	1245682	127749.14	72.7	879.74	343507	100.7349 ng/ml
Diazepam	5.939	447922	2405.61	88.9	3057.36	211252	104.2937 ng/ml
EDDP	5.269	1059960	3292.69	48.6	354.66	639871	100.5696 ng/ml
Fentanyl	5.096	70394	284.88	81.6	92.39	487760	10.1377 ng/ml
Fluorofentanyl	5.150	289236	382.77	35.4	5033.64	5920	9.8909 ng/ml
Fluoxetine	5.712	479471	22621.67	6.9	24376.82	169579	97.8327 ng/ml
Hydroxyzine	5.702	544512	19441.01	77.5	299134.02	307471	97.5527 ng/ml
Methadone	5.657	1719591	35526.97	40.1	15219.43	524999	94.5892 ng/ml
Methamphetamine	3.225	1401030	2210.38	39.1	534.35	920469	109.4309 ng/ml
Nordiazepam	5.878	404248	∞	67.6	398.80	136817	105.7396 ng/ml
Norfentanyl	4.085	236036	483.23	33.2	1277.40	850739	9.4538 ng/ml
Phentermine	3.780	333166	294.66	6.4	470.80	619409	104.1298 ng/ml



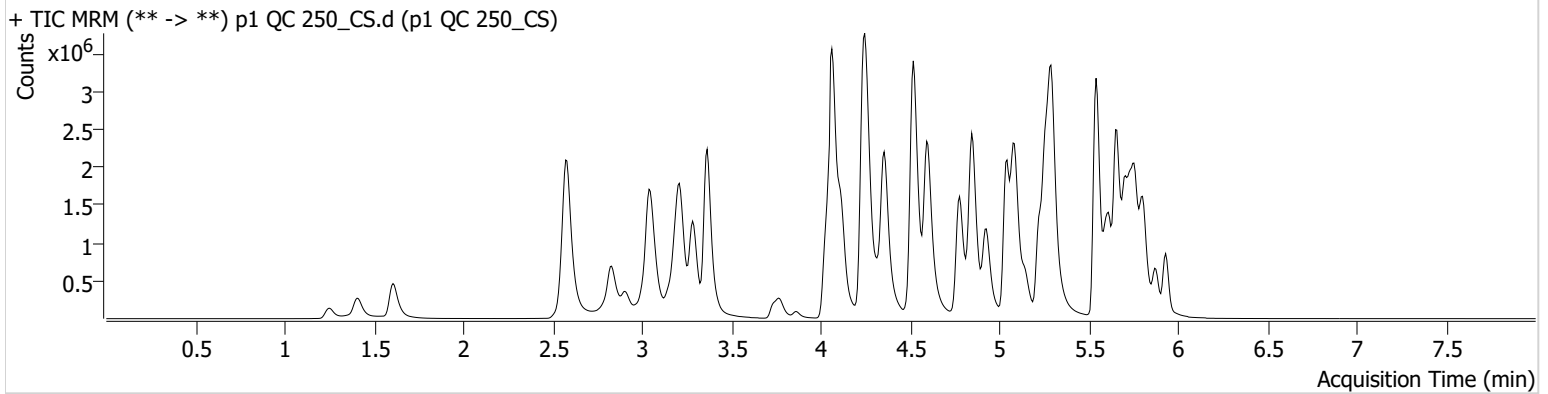
AM #28 Multi-Drug Quant. Results

Batch results D:\MassHunter\Data\2023\AM 27 28\102523 AM 27 28 TS CS\QuantResults\AM 28_CS Cases.batch.bin
Calibration Last Update 10/27/2023 11:36:07 AM

Instrument Falco (069901) **Data File** p1 QC 250_CS.d
Type QC **Sample** p1 QC 250_CS
Acq. Method AM 28 MDQ P1.m **Operator** Celena Shrum
Sample Position P2-F11 **Comment**
Injection Volume 2
Acq. Date-Time 10/26/2023 2:31:15 AM
Sample Info.

Only drugs and concentrations listed on the laboratory report itself are appropriate to be used for interpretation purposes. Any drugs or values included in the notes but not included on the report are used by laboratory personnel to make determinations/reach conclusions within the confines of the methods.

Sample Chromatogram



Name	RT	Resp.	S/N	Ratio	S/N	ISTD Resp.	Final Conc.
a-hydroxyalprazolam	5.683	281825	311.91	83.3	376.39	50477	262.4760 ng/ml
Alprazolam	5.760	1258881	773.07	120.3	1445.37	182359	273.4010 ng/ml
Amphetamine	3.049	4325004	6342.42	38.6	3324.87	154567	219.1031 ng/ml
Bupropion	4.779	2761213	58824.93	72.1	744.67	307480	249.5512 ng/ml
Diazepam	5.932	919953	4120.85	86.6	13079.57	172152	262.8526 ng/ml
EDDP	5.262	2444992	60139.64	47.4	1790.83	591701	250.2565 ng/ml
Fentanyl	5.089	142687	196.94	79.4	160549.85	377541	26.4227 ng/ml
Fluorofentanyl	5.143	610857	19109.62	35.0	4136.06	4585	26.9755 ng/ml
Fluoxetine	5.705	763910	1040.48	6.9	76239.04	102961	256.4346 ng/ml
Hydroxyzine	5.702	1067821	54798.76	83.6	364651.31	246961	237.4981 ng/ml
Methadone	5.657	3784525	1773.68	38.3	179950.62	437343	248.6478 ng/ml
Methamphetamine	3.218	2961816	1066.44	38.5	1551.11	822746	259.6029 ng/ml
Nordiazepam	5.878	745957	464.13	70.7	19214.35	105635	252.8054 ng/ml
Norfentanyl	4.078	432907	23928.92	34.3	2926.08	598151	24.5361 ng/ml
Phentermine	3.773	667313	469.54	6.3	763.31	533391	242.3263 ng/ml



AM #28 Multi-Drug Quant. Results

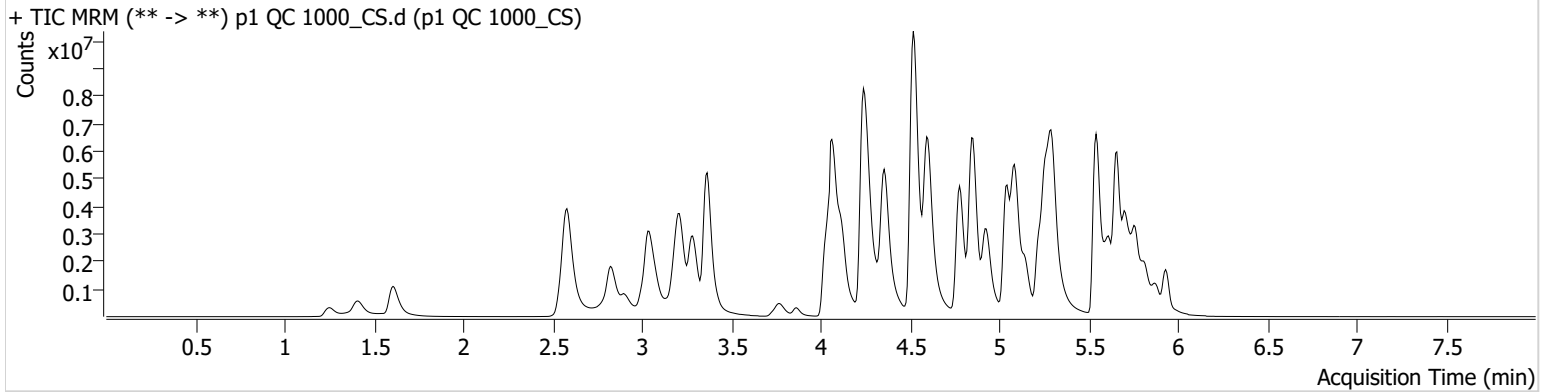
Batch results D:\MassHunter\Data\2023\AM 27 28\102523 AM 27 28 TS CS\QuantResults\AM 28_CS Cases.batch.bin
Calibration Last Update 10/27/2023 11:36:07 AM

Instrument Falco (069901)
Type QC
Acq. Method AM 28 MDQ P1.m
Sample Position P2-E11
Injection Volume 2
Acq. Date-Time 10/26/2023 2:52:30 AM
Sample Info.

Data File p1 QC 1000_CS.d
Sample p1 QC 1000_CS
Operator Celena Shrum
Comment

Only drugs and concentrations listed on the laboratory report itself are appropriate to be used for interpretation purposes. Any drugs or values included in the notes but not included on the report are used by laboratory personnel to make determinations/reach conclusions within the confines of the methods.

Sample Chromatogram

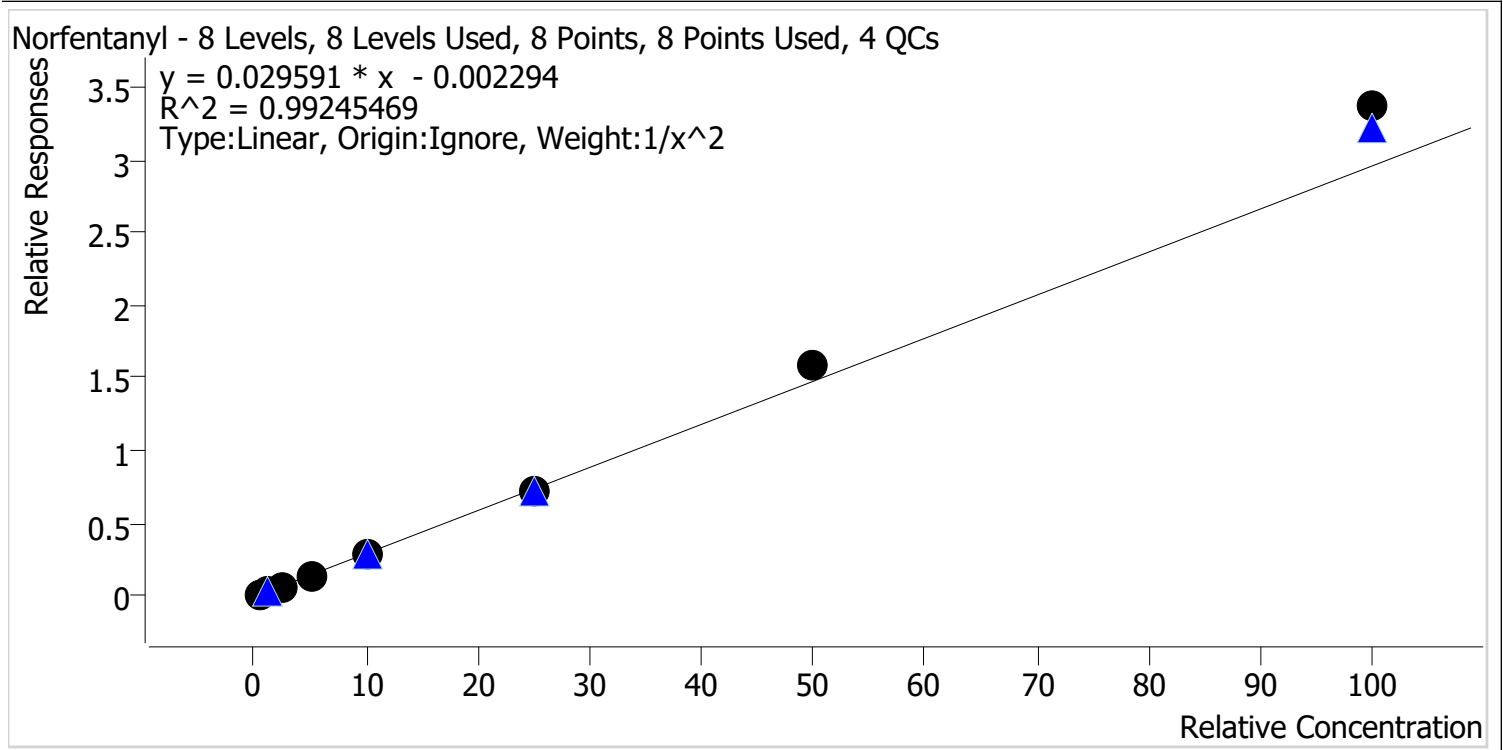


Name	RT	Resp.	S/N	Ratio	S/N	ISTD Resp.	Final Conc.
a-hydroxyalprazolam	5.676	434069	442.82	77.9	372.53	16435	1239.4762 ng/ml
Alprazolam	5.760	2668775	∞	114.1	2733.83	98104	1074.6064 ng/ml
Amphetamine	3.043	8576318	81350.90	38.3	12170.43	114673	586.8516 ng/ml
Bupropion	4.779	8762429	6586.77	70.8	639363.44	246032	989.9068 ng/ml
Diazepam	5.932	2270511	7645.43	88.5	262.07	113300	985.7196 ng/ml
EDDP	5.262	7889552	691.96	45.7	365.07	447756	1065.8046 ng/ml
Fentanyl	5.089	403711	223.20	75.9	168161.65	229672	122.6089 ng/ml
Fluorofentanyl	5.143	2071521	110600.26	35.0	5806.29	3563	117.7117 ng/ml
Fluoxetine	5.712	1309453	1096.05	7.0	61538.50	45498	994.2225 ng/ml
Hydroxyzine	5.702	2746046	2696.17	88.3	1221626.98	134341	1121.0018 ng/ml
Methadone	5.657	10751100	166237.96	37.6	1518.35	296693	1038.7890 ng/ml
Methamphetamine	3.211	8477154	64837.30	36.3	2292.14	707329	865.6021 ng/ml
Nordiazepam	5.878	1505670	1315.87	68.9	7005.93	54359	991.7958 ng/ml
Norfentanyl	4.085	715257	12026.45	35.9	2707.52	222513	108.7083 ng/ml
Phentermine	3.773	1661878	∞	6.1	∞	423232	760.7676 ng/ml



AM #28 Multi-Drug Quant. Calibration Curve Report

Batch results D:\MassHunter\Data\2023\AM 27 28\102523 AM 27 28 TS CS\QuantResults\AM 28_CS Cases.batch.bin
Last Cal. Update 10/27/2023 11:36 AM
Analyst Name ISP\Datastor
Analyte Norfentanyl **Internal Standard** Norfentanyl-D5

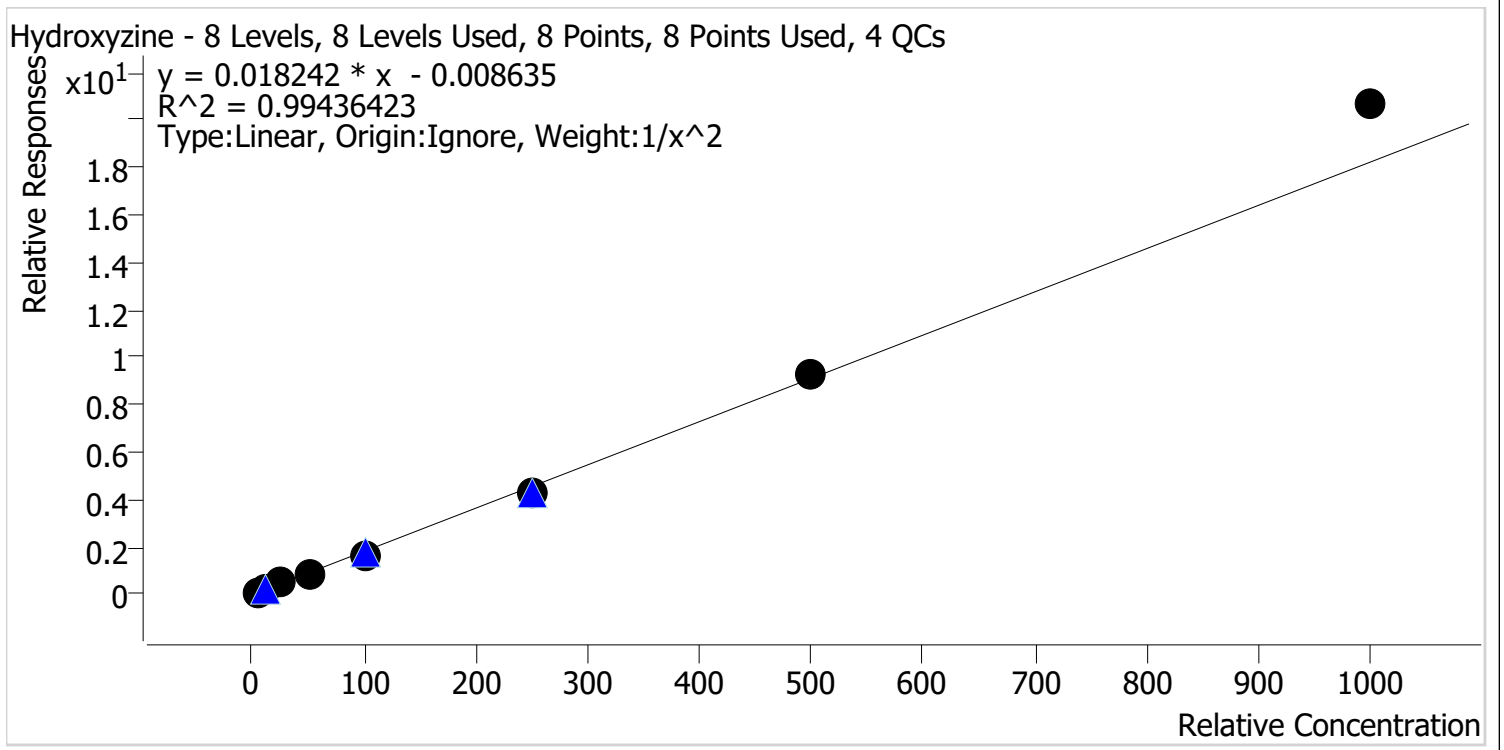


Sample	Level	Enabled	Expected Concentration	Final Concentration	Accuracy
p1 Cal 1-5ng_CS	1	✓	0.5	0.5	104.4
p1 Cal 2-10ng_CS	2	✓	1.0	1.0	95.9
p1 Cal 3 -25ng_CS_r	3	✓	2.5	2.3	92.4
p1 Cal 4-50ng_CS	4	✓	5.0	4.7	93.8
p1 Cal 5-100ng_CS	5	✓	10.0	9.5	94.6
p1 Cal 6-250ng_CS	6	✓	25.0	24.6	98.5
p1 Cal 7-500ng_CS	7	✓	50.0	53.3	106.7
p1 Cal 8-1000ng_CS	8	✓	100.0	113.9	113.9



AM #28 Multi-Drug Quant. Calibration Curve Report

Batch results D:\MassHunter\Data\2023\AM 27 28\102523 AM 27 28 TS CS\QuantResults\AM 28_CS Cases.batch.bin
Last Cal. Update 10/27/2023 11:36 AM
Analyst Name ISP\Datastor
Analyte Hydroxyzine **Internal Standard** Dextromethorphan-D3

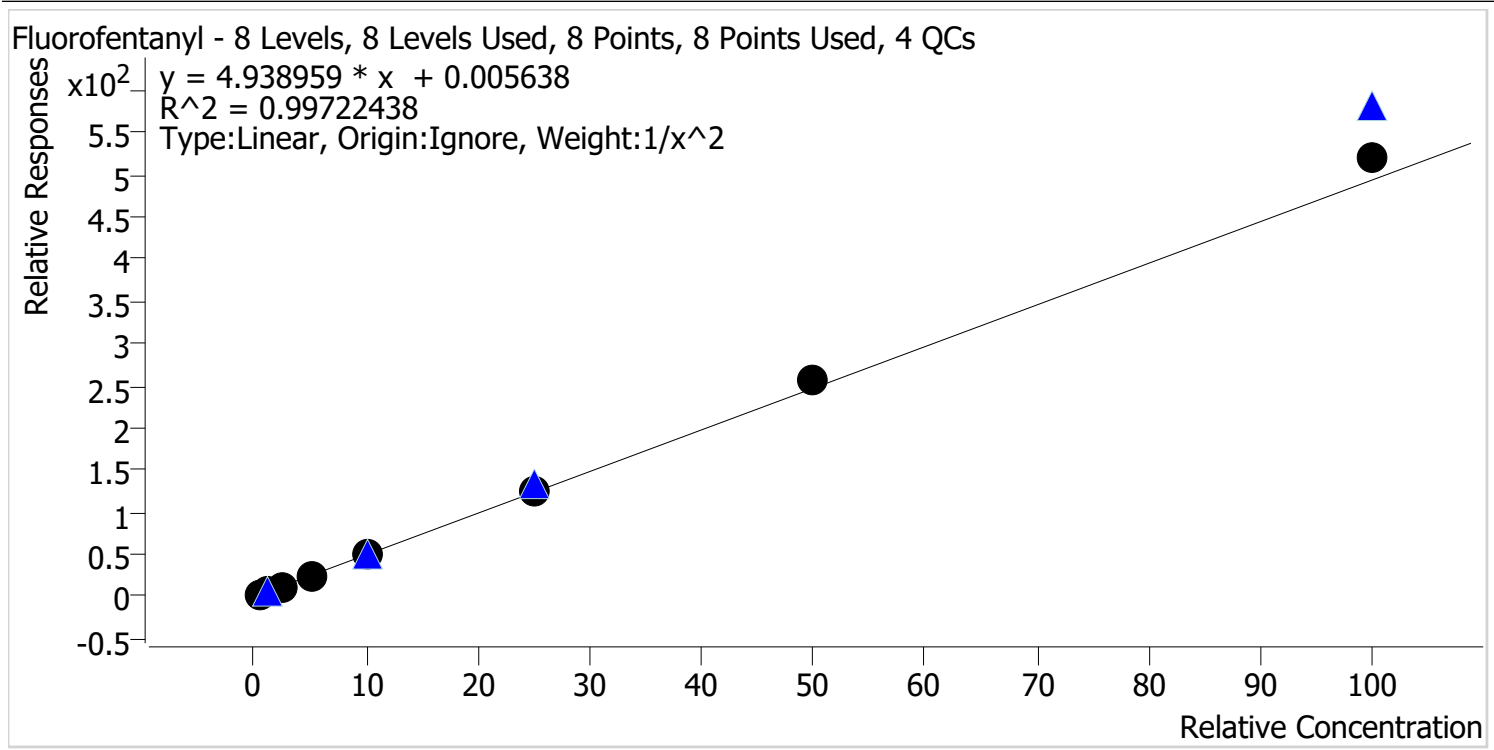


Sample	Level	Enabled	Expected Concentration	Final Concentration	Accuracy
p1 Cal 1-5ng_CS	1	✓	5.0	5.1	102.1
p1 Cal 2-10ng_CS	2	✓	10.0	9.7	96.6
p1 Cal 3 -25ng_CS_r	3	✓	25.0	25.5	101.9
p1 Cal 4-50ng_CS	4	✓	50.0	48.0	95.9
p1 Cal 5-100ng_CS	5	✓	100.0	92.5	92.5
p1 Cal 6-250ng_CS	6	✓	250.0	238.2	95.3
p1 Cal 7-500ng_CS	7	✓	500.0	511.6	102.3
p1 Cal 8-1000ng_CS	8	✓	1000.0	1133.8	113.4



AM #28 Multi-Drug Quant. Calibration Curve Report

Batch results D:\MassHunter\Data\2023\AM 27 28\102523 AM 27 28 TS CS\QuantResults\AM 28_CS Cases.batch.bin
Last Cal. Update 10/27/2023 11:36 AM
Analyst Name ISP\Datastor
Analyte Fluorofentanyl **Internal Standard** Fluorofentanyl-D5

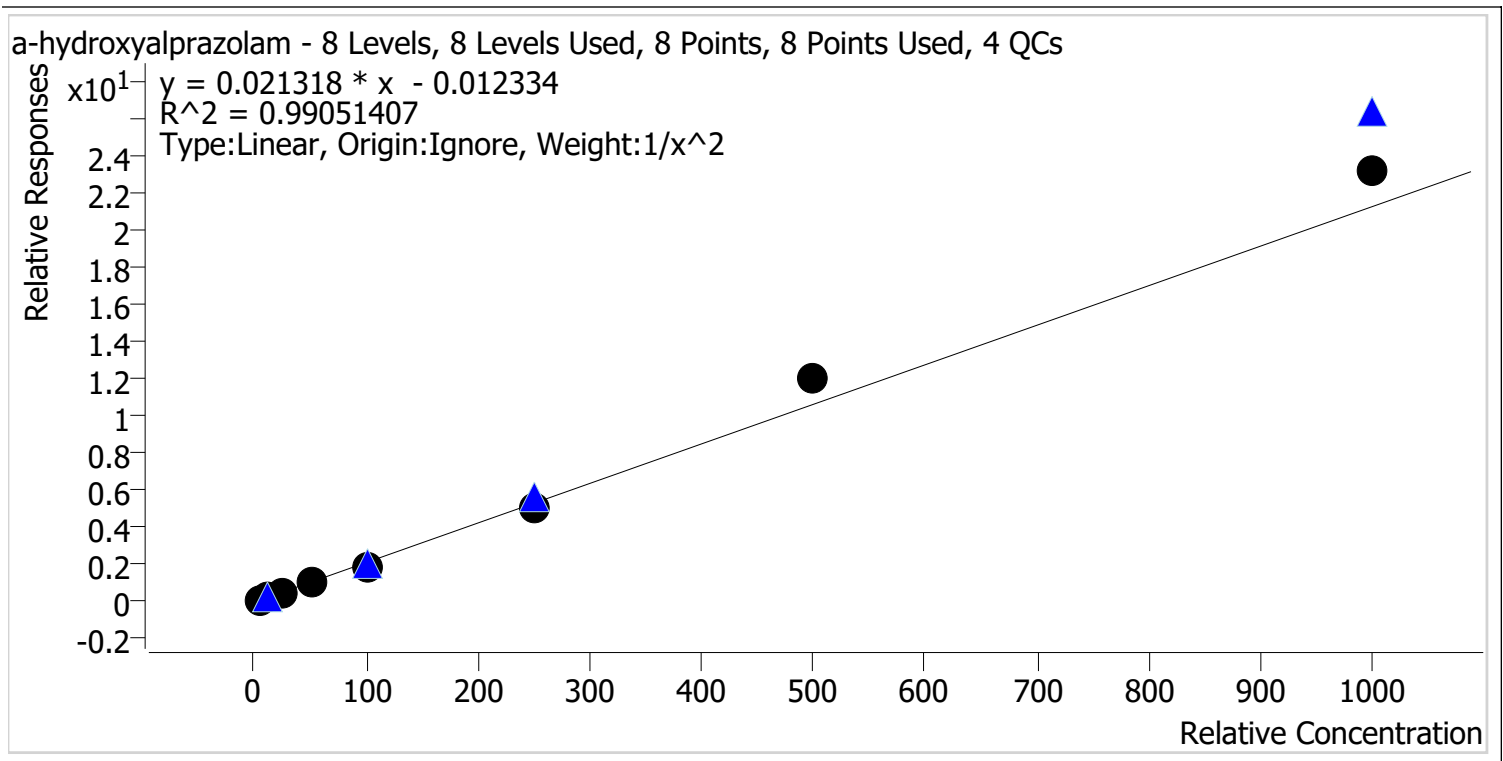


Sample	Level	Enabled	Expected Concentration	Final Concentration	Accuracy
p1 Cal 1-5ng_CS	1	✓	0.5	0.5	100.5
p1 Cal 2-10ng_CS	2	✓	1.0	1.0	102.5
p1 Cal 3 -25ng_CS_r	3	✓	2.5	2.4	94.2
p1 Cal 4-50ng_CS	4	✓	5.0	4.6	92.2
p1 Cal 5-100ng_CS	5	✓	10.0	10.2	102.2
p1 Cal 6-250ng_CS	6	✓	25.0	24.9	99.6
p1 Cal 7-500ng_CS	7	✓	50.0	51.8	103.7
p1 Cal 8-1000ng_CS	8	✓	100.0	105.1	105.1



AM #28 Multi-Drug Quant. Calibration Curve Report

Batch results D:\MassHunter\Data\2023\AM 27 28\102523 AM 27 28 TS CS\QuantResults\AM 28_CS Cases.batch.bin
Last Cal. Update 10/27/2023 11:36 AM
Analyst Name ISP\Datator
Analyte a-hydroxyalprazolam **Internal Standard** a-hydroxyalprazolam-D5

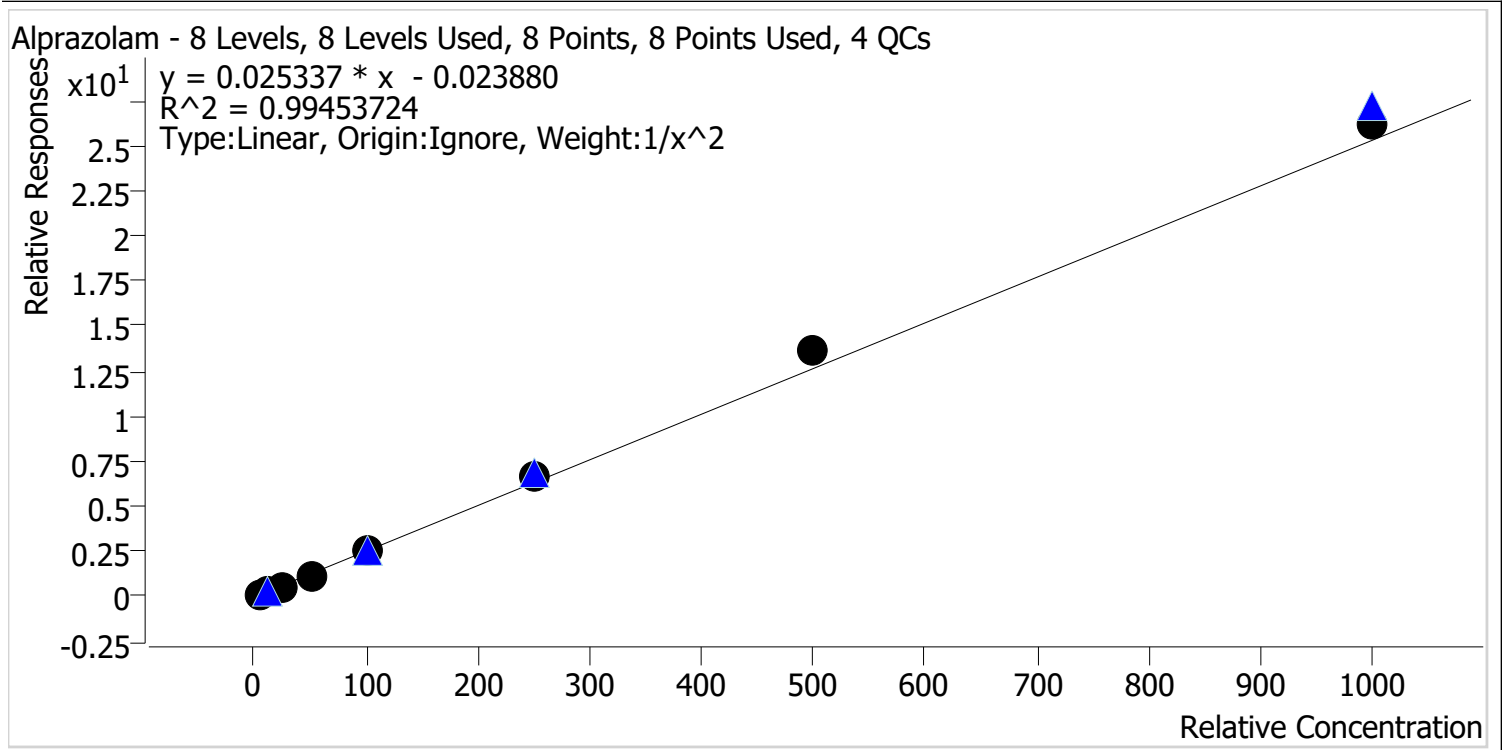


Sample	Level	Enabled	Expected Concentration	Final Concentration	Accuracy
p1 Cal 1-5ng_CS	1	✓	5.0	5.2	103.6
p1 Cal 2-10ng_CS	2	✓	10.0	9.7	97.4
p1 Cal 3 -25ng_CS_r	3	✓	25.0	22.7	90.8
p1 Cal 4-50ng_CS	4	✓	50.0	49.6	99.1
p1 Cal 5-100ng_CS	5	✓	100.0	89.5	89.5
p1 Cal 6-250ng_CS	6	✓	250.0	241.5	96.6
p1 Cal 7-500ng_CS	7	✓	500.0	570.7	114.1
p1 Cal 8-1000ng_CS	8	✓	1000.0	1088.1	108.8



AM #28 Multi-Drug Quant. Calibration Curve Report

Batch results D:\MassHunter\Data\2023\AM 27 28\102523 AM 27 28 TS CS\QuantResults\AM 28_CS Cases.batch.bin
Last Cal. Update 10/27/2023 11:36 AM
Analyst Name ISP\Datastor
Analyte Alprazolam **Internal Standard** Alprazolam-D5



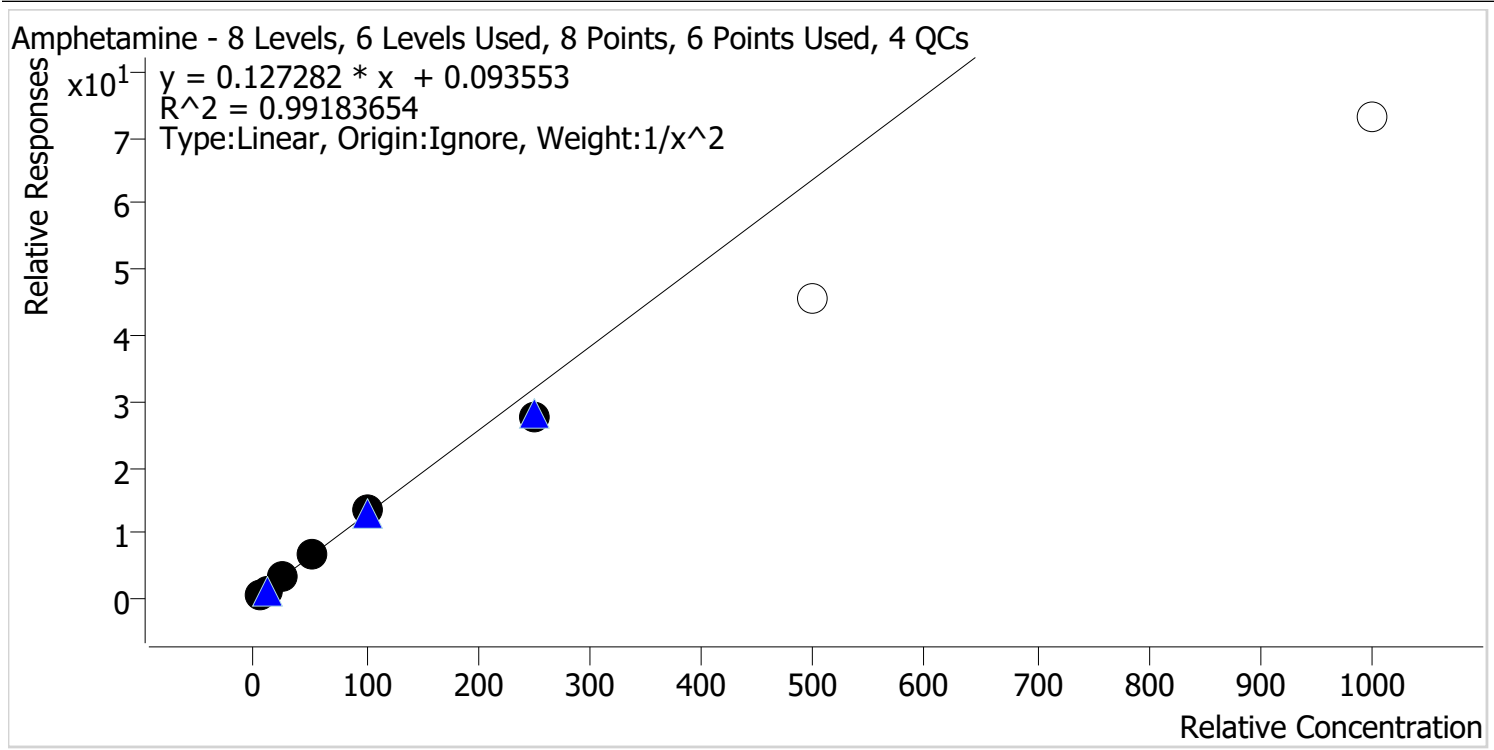
Sample	Level	Enabled	Expected Concentration	Final Concentration	Accuracy
p1 Cal 1-5ng_CS	1	✓	5.0	5.3	105.2
p1 Cal 2-10ng_CS	2	✓	10.0	9.4	94.2
p1 Cal 3 -25ng_CS_r	3	✓	25.0	22.7	90.8
p1 Cal 4-50ng_CS	4	✓	50.0	46.7	93.5
p1 Cal 5-100ng_CS	5	✓	100.0	99.6	99.6
p1 Cal 6-250ng_CS	6	✓	250.0	264.6	105.8
p1 Cal 7-500ng_CS	7	✓	500.0	538.1	107.6
p1 Cal 8-1000ng_CS	8	✓	1000.0	1032.4	103.2

CS



AM #28 Multi-Drug Quant. Calibration Curve Report

Batch results D:\MassHunter\Data\2023\AM 27 28\102523 AM 27 28 TS CS\QuantResults\AM 28_CS Cases.batch.bin
Last Cal. Update 10/27/2023 11:36 AM
Analyst Name ISP\Datator
Analyte Amphetamine **Internal Standard** Amphetamine-D11



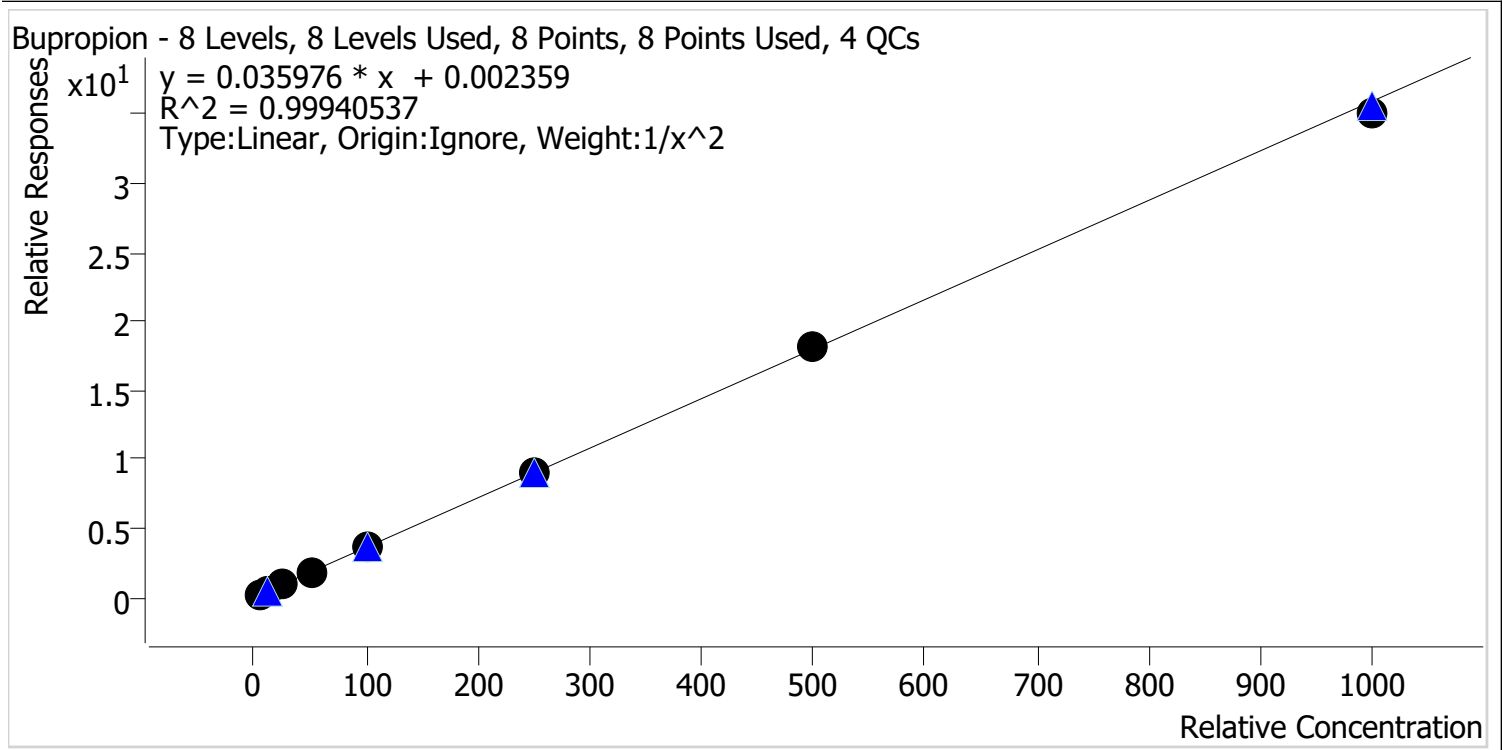
Sample	Level	Enabled	Expected Concentration	Final Concentration	Accuracy
p1 Cal 1-5ng_CS	1	✓	5.0	4.8	96.5
p1 Cal 2-10ng_CS	2	✓	10.0	10.5	104.9
p1 Cal 3 -25ng_CS_r	3	✓	25.0	25.9	103.4
p1 Cal 4-50ng_CS	4	✓	50.0	51.6	103.3
p1 Cal 5-100ng_CS	5	✓	100.0	105.5	105.5
p1 Cal 6-250ng_CS	6	✓	250.0	216.0	86.4
p1 Cal 7-500ng_CS	7	x	500.0	356.4	71.3
p1 Cal 8-1000ng_CS	8	x	1000.0	573.2	57.3

CS



AM #28 Multi-Drug Quant. Calibration Curve Report

Batch results D:\MassHunter\Data\2023\AM 27 28\102523 AM 27 28 TS CS\QuantResults\AM 28_CS Cases.batch.bin
Last Cal. Update 10/27/2023 11:36 AM
Analyst Name ISP\Datastor
Analyte Bupropion **Internal Standard** Bupropion-D9



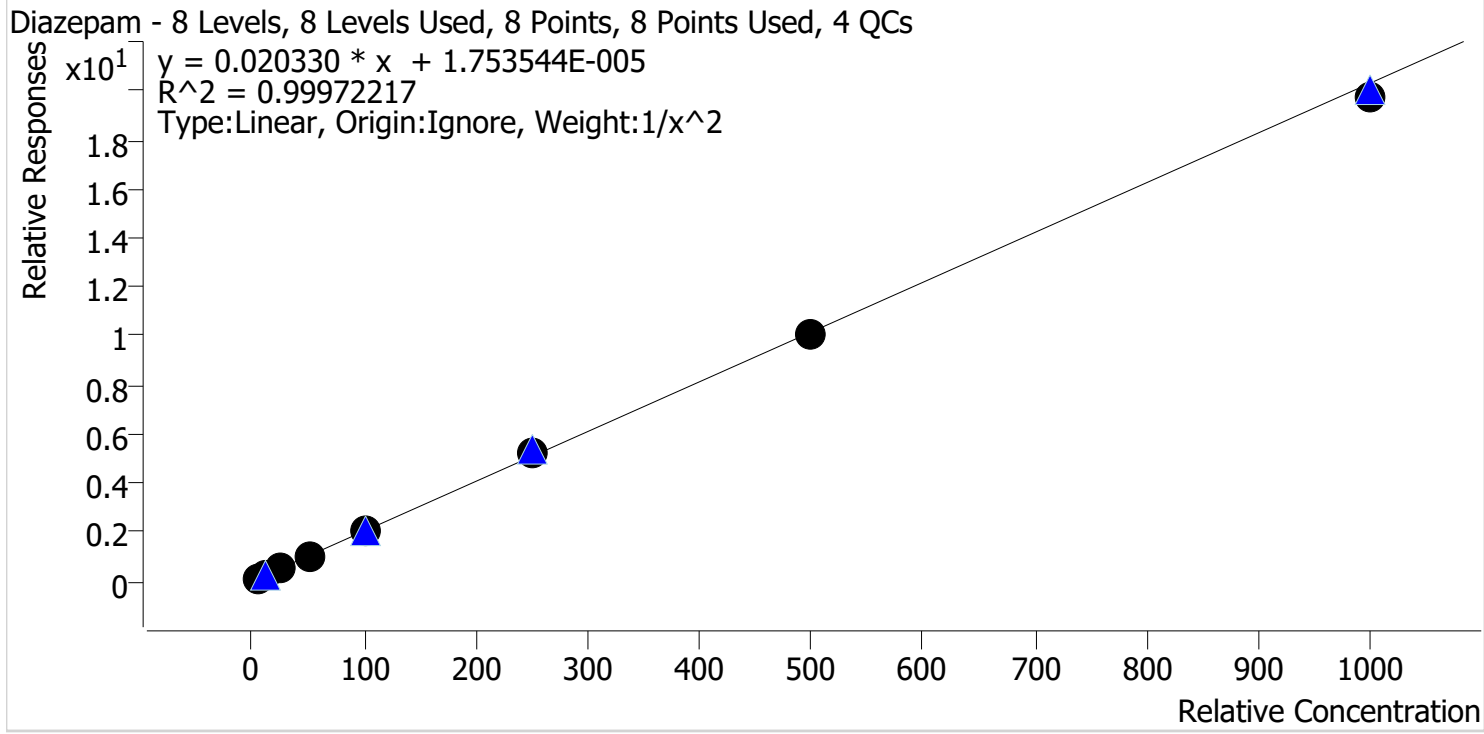
Sample	Level	Enabled	Expected Concentration	Final Concentration	Accuracy
p1 Cal 1-5ng_CS	1	✓	5.0	5.1	101.5
p1 Cal 2-10ng_CS	2	✓	10.0	9.7	96.8
p1 Cal 3 -25ng_CS_r	3	✓	25.0	24.8	99.3
p1 Cal 4-50ng_CS	4	✓	50.0	50.1	100.2
p1 Cal 5-100ng_CS	5	✓	100.0	103.0	103.0
p1 Cal 6-250ng_CS	6	✓	250.0	250.5	100.2
p1 Cal 7-500ng_CS	7	✓	500.0	508.0	101.6
p1 Cal 8-1000ng_CS	8	✓	1000.0	973.3	97.3

CS



AM #28 Multi-Drug Quant. Calibration Curve Report

Batch results D:\MassHunter\Data\2023\AM 27 28\102523 AM 27 28 TS CS\QuantResults\AM 28_CS Cases.batch.bin
Last Cal. Update 10/27/2023 11:36 AM
Analyst Name ISP\Datastor
Analyte Diazepam **Internal Standard** Diazepam-D5

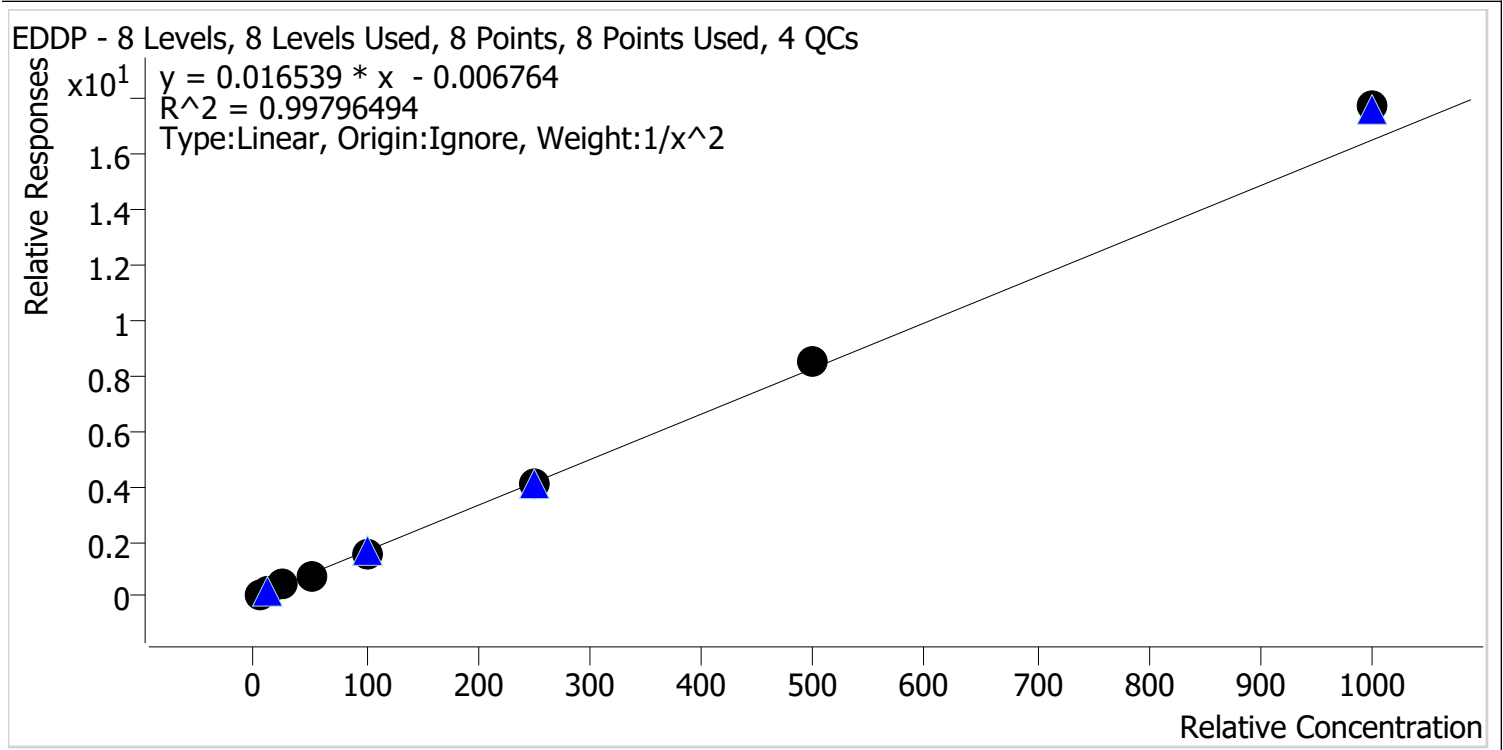


Sample	Level	Enabled	Expected Concentration	Final Concentration	Accuracy
p1 Cal 1-5ng_CS	1	✓	5.0	5.0	99.7
p1 Cal 2-10ng_CS	2	✓	10.0	10.0	100.3
p1 Cal 3 -25ng_CS_r	3	✓	25.0	25.0	100.0
p1 Cal 4-50ng_CS	4	✓	50.0	50.3	100.6
p1 Cal 5-100ng_CS	5	✓	100.0	100.9	100.9
p1 Cal 6-250ng_CS	6	✓	250.0	255.0	102.0
p1 Cal 7-500ng_CS	7	✓	500.0	497.7	99.5
p1 Cal 8-1000ng_CS	8	✓	1000.0	969.7	97.0



AM #28 Multi-Drug Quant. Calibration Curve Report

Batch results D:\MassHunter\Data\2023\AM 27 28\102523 AM 27 28 TS CS\QuantResults\AM 28_CS Cases.batch.bin
Last Cal. Update 10/27/2023 11:36 AM
Analyst Name ISP\Datator
Analyte EDDP **Internal Standard** EDDP-D3



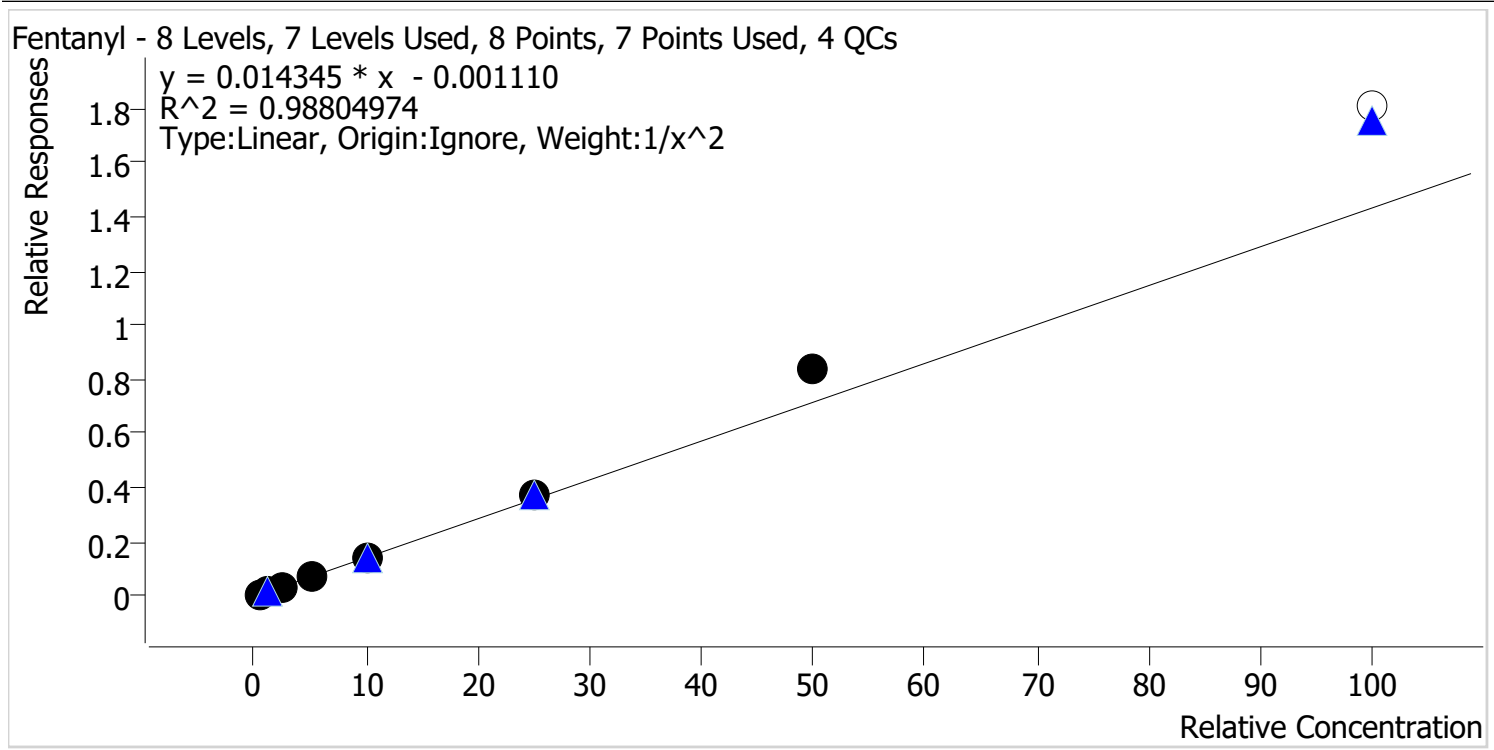
Sample	Level	Enabled	Expected Concentration	Final Concentration	Accuracy
p1 Cal 1-5ng_CS	1	✓	5.0	5.1	102.5
p1 Cal 2-10ng_CS	2	✓	10.0	9.7	97.2
p1 Cal 3 -25ng_CS_r	3	✓	25.0	24.2	97.0
p1 Cal 4-50ng_CS	4	✓	50.0	48.2	96.4
p1 Cal 5-100ng_CS	5	✓	100.0	97.0	97.0
p1 Cal 6-250ng_CS	6	✓	250.0	249.7	99.9
p1 Cal 7-500ng_CS	7	✓	500.0	513.8	102.8
p1 Cal 8-1000ng_CS	8	✓	1000.0	1073.9	107.4

CS



AM #28 Multi-Drug Quant. Calibration Curve Report

Batch results D:\MassHunter\Data\2023\AM 27 28\102523 AM 27 28 TS CS\QuantResults\AM 28_CS Cases.batch.bin
Last Cal. Update 10/27/2023 11:36 AM
Analyst Name ISP\Datastor
Analyte Fentanyl **Internal Standard** Fentanyl-D5



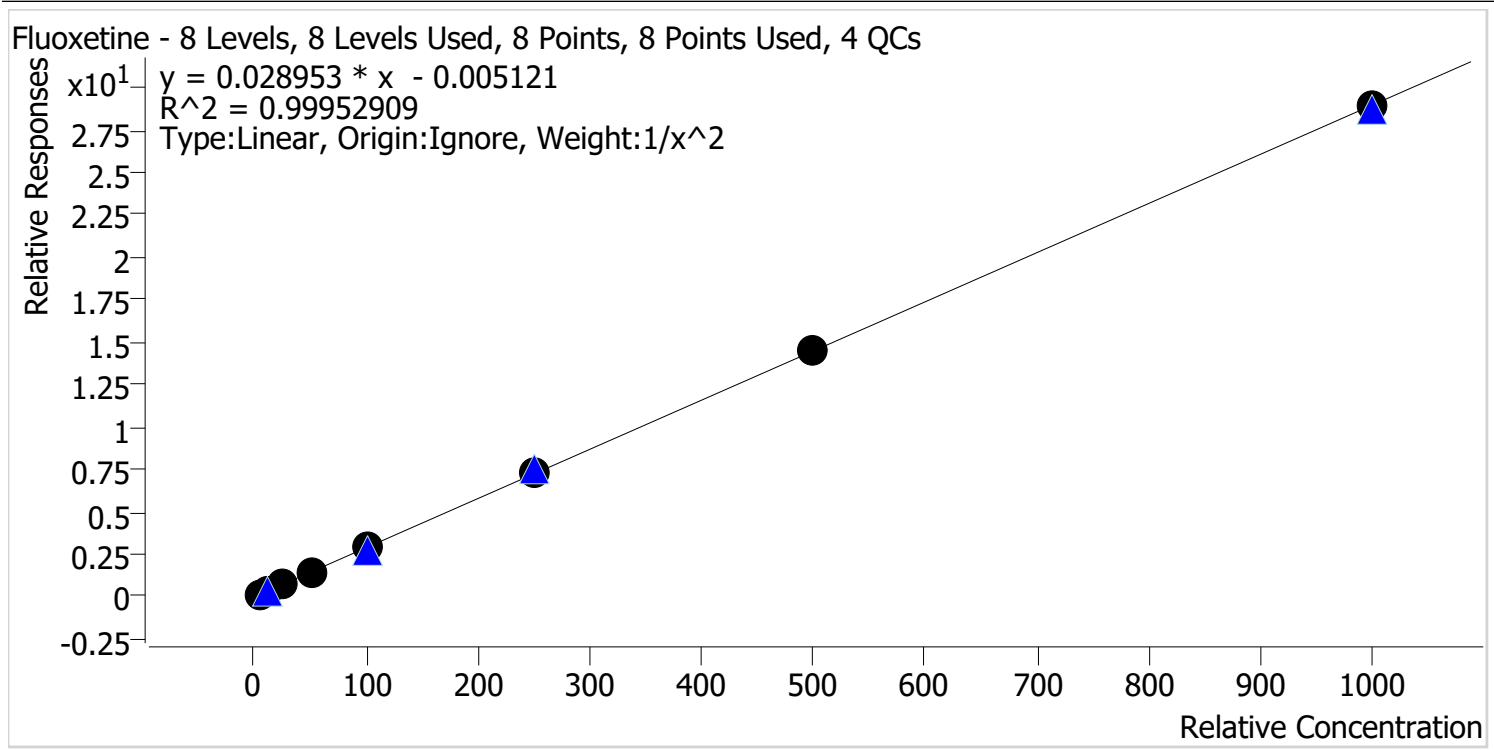
Sample	Level	Enabled	Expected Concentration	Final Concentration	Accuracy
p1 Cal 1-5ng_CS	1	✓	0.5	0.5	106.6
p1 Cal 2-10ng_CS	2	✓	1.0	0.9	91.4
p1 Cal 3 -25ng_CS_r	3	✓	2.5	2.3	91.4
p1 Cal 4-50ng_CS	4	✓	5.0	4.7	93.8
p1 Cal 5-100ng_CS	5	✓	10.0	9.7	97.0
p1 Cal 6-250ng_CS	6	✓	25.0	25.9	103.5
p1 Cal 7-500ng_CS	7	✓	50.0	58.2	116.4
p1 Cal 8-1000ng_CS	8	x	100.0	126.2	126.2

CS



AM #28 Multi-Drug Quant. Calibration Curve Report

Batch results D:\MassHunter\Data\2023\AM 27 28\102523 AM 27 28 TS CS\QuantResults\AM 28_CS Cases.batch.bin
Last Cal. Update 10/27/2023 11:36 AM
Analyst Name ISP\Datator
Analyte Fluoxetine **Internal Standard** Fluoxetine-D6

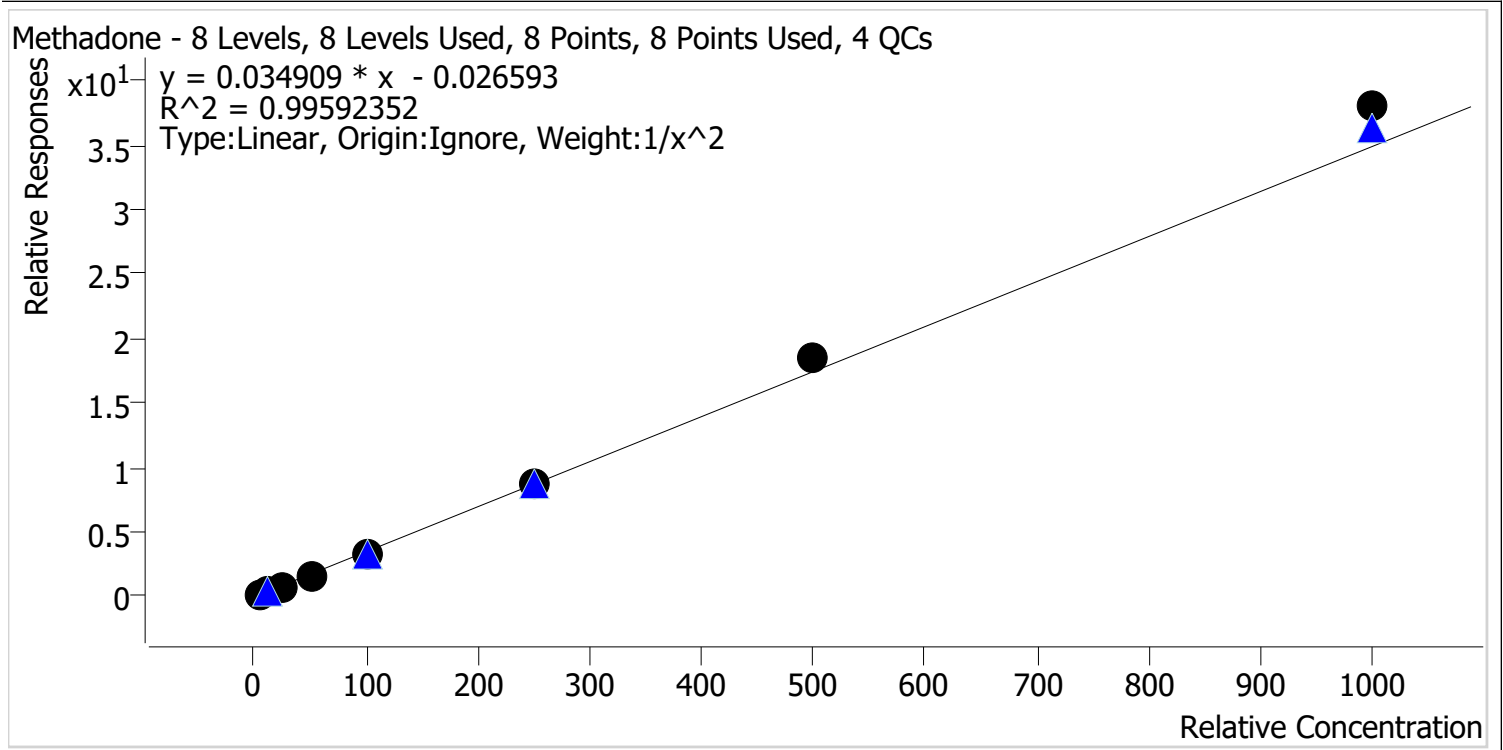


Sample	Level	Enabled	Expected Concentration	Final Concentration	Accuracy
p1 Cal 1-5ng_CS	1	✓	5.0	5.0	100.7
p1 Cal 2-10ng_CS	2	✓	10.0	10.0	100.2
p1 Cal 3 -25ng_CS_r	3	✓	25.0	23.9	95.6
p1 Cal 4-50ng_CS	4	✓	50.0	50.0	100.0
p1 Cal 5-100ng_CS	5	✓	100.0	101.8	101.8
p1 Cal 6-250ng_CS	6	✓	250.0	252.3	100.9
p1 Cal 7-500ng_CS	7	✓	500.0	505.1	101.0
p1 Cal 8-1000ng_CS	8	✓	1000.0	997.8	99.8



AM #28 Multi-Drug Quant. Calibration Curve Report

Batch results D:\MassHunter\Data\2023\AM 27 28\102523 AM 27 28 TS CS\QuantResults\AM 28_CS Cases.batch.bin
Last Cal. Update 10/27/2023 11:36 AM
Analyst Name ISP\Datastor
Analyte Methadone **Internal Standard** Methadone-D9

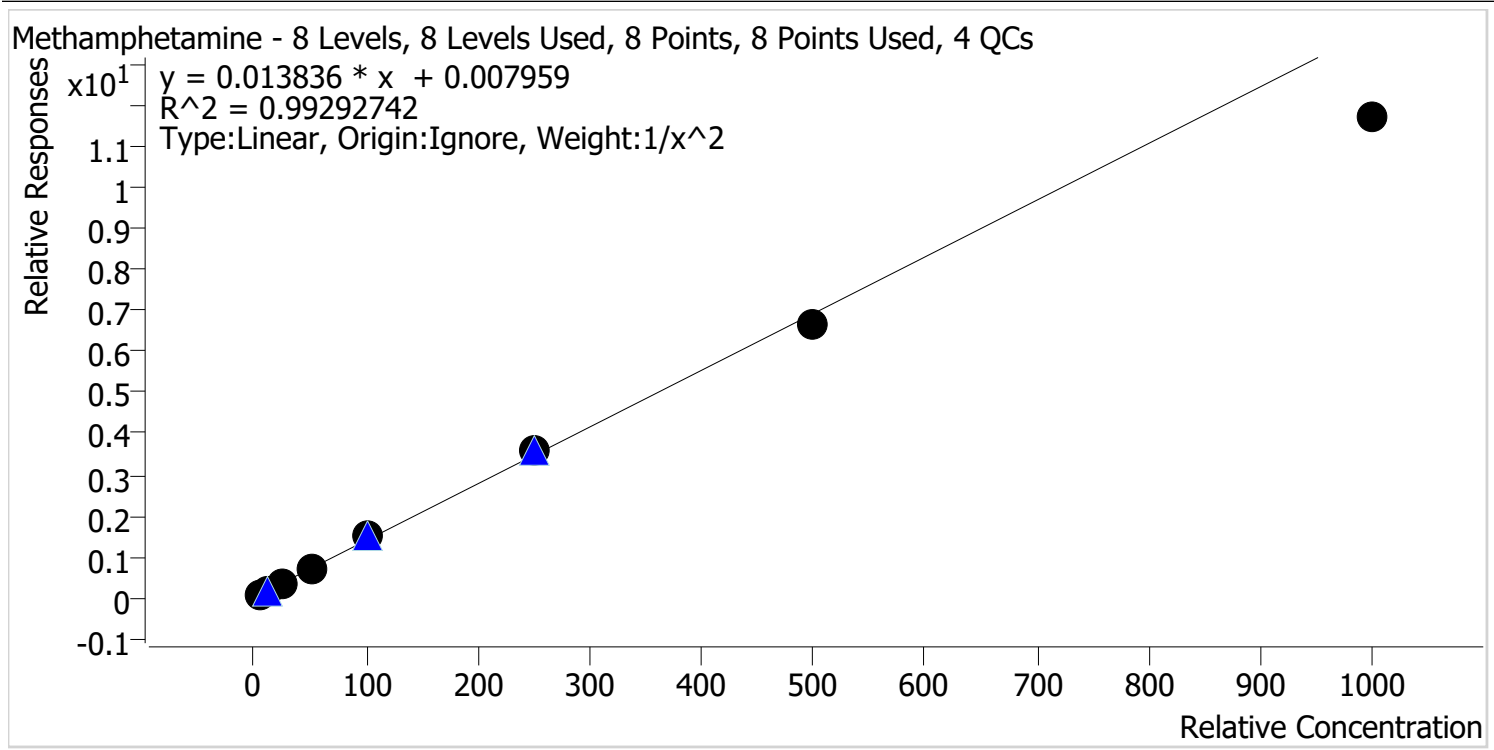


Sample	Level	Enabled	Expected Concentration	Final Concentration	Accuracy
p1 Cal 1-5ng_CS	1	✓	5.0	5.2	103.7
p1 Cal 2-10ng_CS	2	✓	10.0	9.6	95.8
p1 Cal 3 -25ng_CS_r	3	✓	25.0	23.9	95.6
p1 Cal 4-50ng_CS	4	✓	50.0	46.7	93.4
p1 Cal 5-100ng_CS	5	✓	100.0	97.2	97.2
p1 Cal 6-250ng_CS	6	✓	250.0	249.7	99.9
p1 Cal 7-500ng_CS	7	✓	500.0	528.2	105.6
p1 Cal 8-1000ng_CS	8	✓	1000.0	1089.4	108.9



AM #28 Multi-Drug Quant. Calibration Curve Report

Batch results D:\MassHunter\Data\2023\AM 27 28\102523 AM 27 28 TS CS\QuantResults\AM 28_CS Cases.batch.bin
Last Cal. Update 10/27/2023 11:36 AM
Analyst Name ISP\Datator
Analyte Methamphetamine **Internal Standard** Methamphetamine-D11



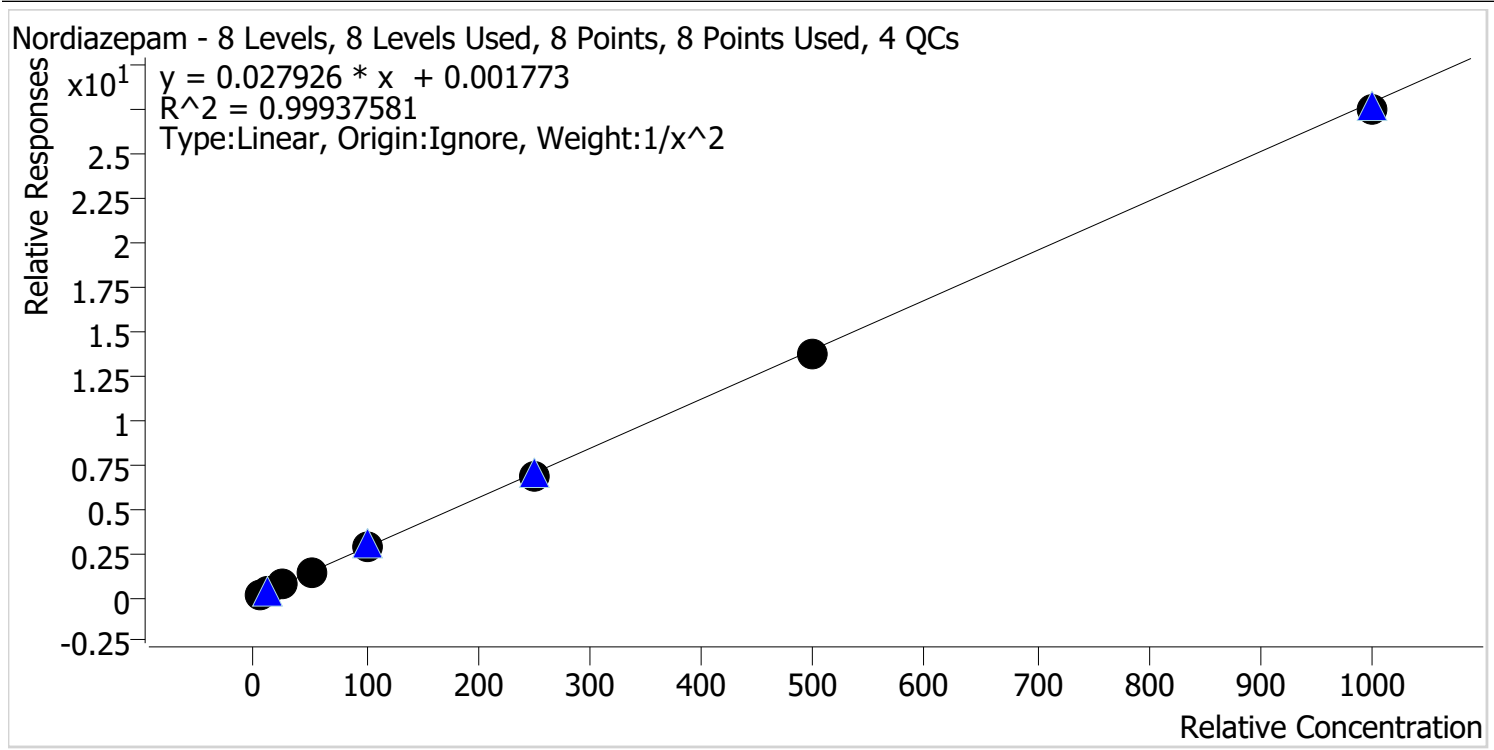
Sample	Level	Enabled	Expected Concentration	Final Concentration	Accuracy
p1 Cal 1-5ng_CS	1	✓	5.0	4.9	97.7
p1 Cal 2-10ng_CS	2	✓	10.0	10.0	100.5
p1 Cal 3 -25ng_CS_r	3	✓	25.0	26.6	106.3
p1 Cal 4-50ng_CS	4	✓	50.0	52.5	105.1
p1 Cal 5-100ng_CS	5	✓	100.0	106.7	106.7
p1 Cal 6-250ng_CS	6	✓	250.0	257.8	103.1
p1 Cal 7-500ng_CS	7	✓	500.0	479.7	95.9
p1 Cal 8-1000ng_CS	8	✓	1000.0	846.9	84.7

CS



AM #28 Multi-Drug Quant. Calibration Curve Report

Batch results D:\MassHunter\Data\2023\AM 27 28\102523 AM 27 28 TS CS\QuantResults\AM 28_CS Cases.batch.bin
Last Cal. Update 10/27/2023 11:36 AM
Analyst Name ISP\Datastor
Analyte Nordiazepam **Internal Standard** Nordiazepam-D5

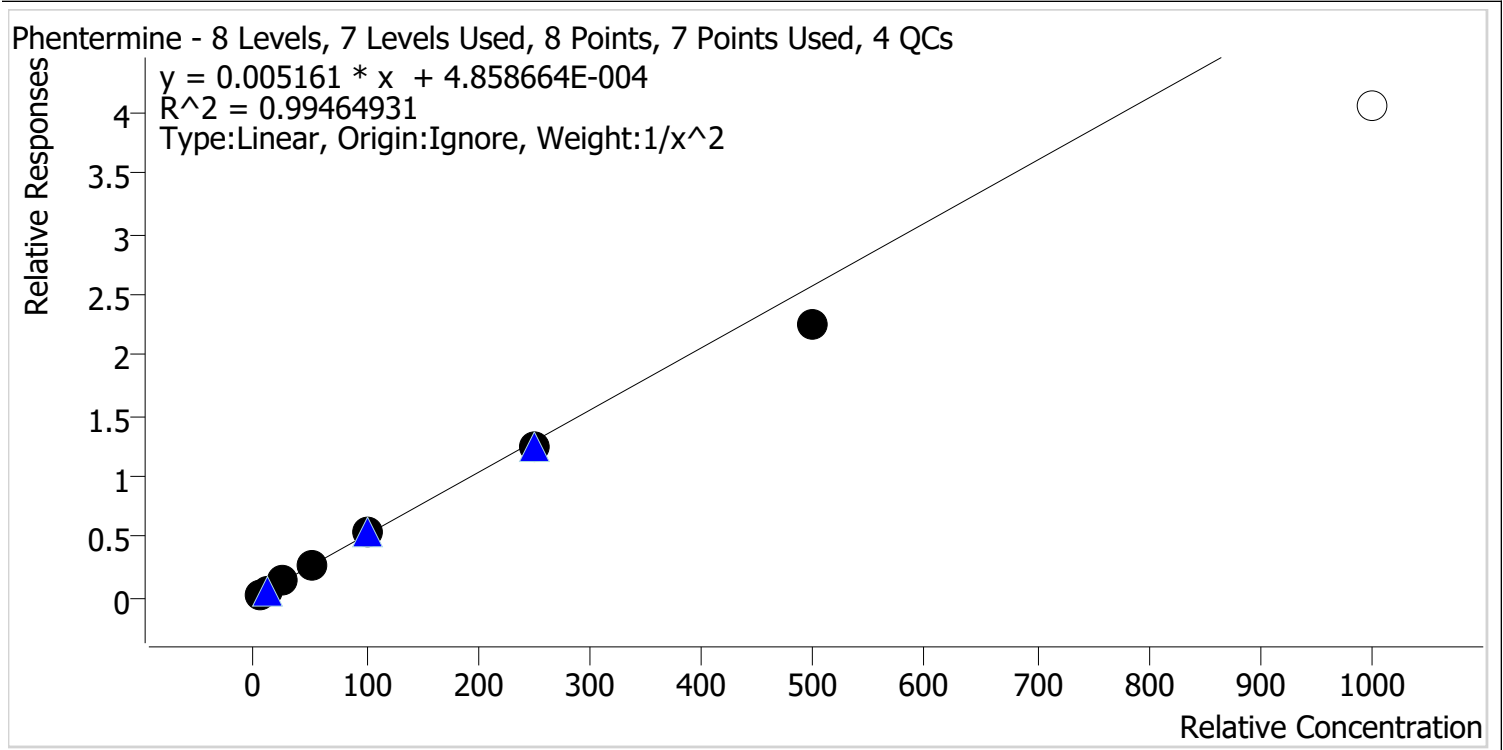


Sample	Level	Enabled	Expected Concentration	Final Concentration	Accuracy
p1 Cal 1-5ng_CS	1	✓	5.0	5.0	100.6
p1 Cal 2-10ng_CS	2	✓	10.0	9.7	97.2
p1 Cal 3 -25ng_CS_r	3	✓	25.0	25.8	103.1
p1 Cal 4-50ng_CS	4	✓	50.0	50.3	100.6
p1 Cal 5-100ng_CS	5	✓	100.0	102.8	102.8
p1 Cal 6-250ng_CS	6	✓	250.0	245.0	98.0
p1 Cal 7-500ng_CS	7	✓	500.0	493.5	98.7
p1 Cal 8-1000ng_CS	8	✓	1000.0	988.9	98.9



AM #28 Multi-Drug Quant. Calibration Curve Report

Batch results D:\MassHunter\Data\2023\AM 27 28\102523 AM 27 28 TS CS\QuantResults\AM 28_CS Cases.batch.bin
Last Cal. Update 10/27/2023 11:36 AM
Analyst Name ISP\Datastor
Analyte Phentermine **Internal Standard** Phentermine-D5



Sample	Level	Enabled	Expected Concentration	Final Concentration	Accuracy
p1 Cal 1-5ng_CS	1	✓	5.0	4.9	97.9
p1 Cal 2-10ng_CS	2	✓	10.0	10.1	101.1
p1 Cal 3 -25ng_CS_r	3	✓	25.0	26.1	104.3
p1 Cal 4-50ng_CS	4	✓	50.0	52.8	105.7
p1 Cal 5-100ng_CS	5	✓	100.0	105.2	105.2
p1 Cal 6-250ng_CS	6	✓	250.0	244.3	97.7
p1 Cal 7-500ng_CS	7	✓	500.0	440.4	88.1
p1 Cal 8-1000ng_CS	8	✗	1000.0	786.9	78.7



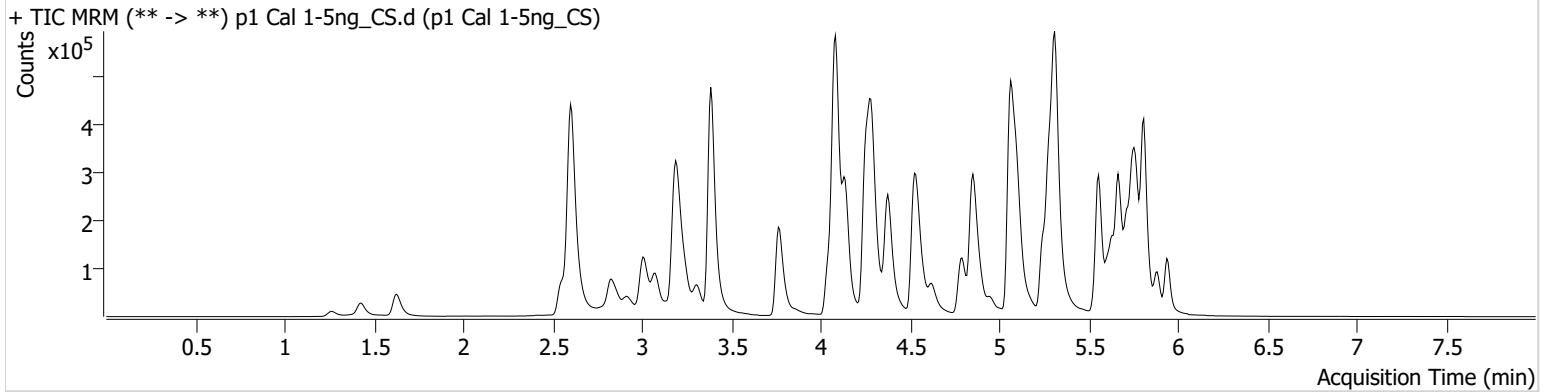
AM #28 Multi-Drug Quant. Results

Batch results D:\MassHunter\Data\2023\AM 27 28\102523 AM 27 28 TS CS\QuantResults\AM 28_CS Cases.batch.bin
Calibration Last Update 10/27/2023 11:36:07 AM

Instrument Falco (069901) **Data File** p1 Cal 1-5ng_CS.d
Type Cal **Sample** p1 Cal 1-5ng_CS
Acq. Method AM 28 MDQ P1.m **Operator** Celena Shrum
Sample Position P2-H12 **Comment**
Injection Volume 2
Acq. Date-Time 10/26/2023 12:01:38 AM
Sample Info.

Only drugs and concentrations listed on the laboratory report itself are appropriate to be used for interpretation purposes. Any drugs or values included in the notes but not included on the report are used by laboratory personnel to make determinations/reach conclusions within the confines of the methods.

Sample Chromatogram



Name	RT	Resp.	S/N	Ratio	S/N	ISTD Resp.	Final Conc.
a-hydroxyalprazolam	5.696	9130	185.92	78.8	110.12	93058	5.1808 ng/ml
Alprazolam	5.774	30572	327.72	125.2	220.64	279533	5.2590 ng/ml
Amphetamine	3.077	116257	280.53	38.9	688.51	164211	4.8273 ng/ml
Bupropion	4.806	56116	871.68	75.7	2062.64	303325	5.0769 ng/ml
Diazepam	5.945	21350	107.29	91.7	95.57	210540	4.9870 ng/ml
EDDP	5.283	46368	746.43	47.6	40.13	594788	5.1226 ng/ml
Fentanyl	5.110	2922	88.23	93.5	520.67	447104	0.5329 ng/ml
Fluorofentanyl	5.164	11718	∞	39.5	167.60	4709	0.5027 ng/ml
Fluoxetine	5.719	20483	536.81	7.2	1800.32	145673	5.0333 ng/ml
Hydroxyzine	5.715	23653	508.06	68.4	20810.89	279897	5.1058 ng/ml
Methadone	5.671	74690	2009.07	40.0	303.68	483591	5.1861 ng/ml
Methamphetamine	3.245	66348	106.96	38.8	248.86	878064	4.8859 ng/ml
Nordiazepam	5.885	19858	259.10	66.4	769.38	139585	5.0309 ng/ml
Norfentanyl	4.105	12534	249.19	29.5	14.57	953411	0.5218 ng/ml
Phentermine	3.800	15205	37.35	8.4	31.07	590299	4.8969 ng/ml



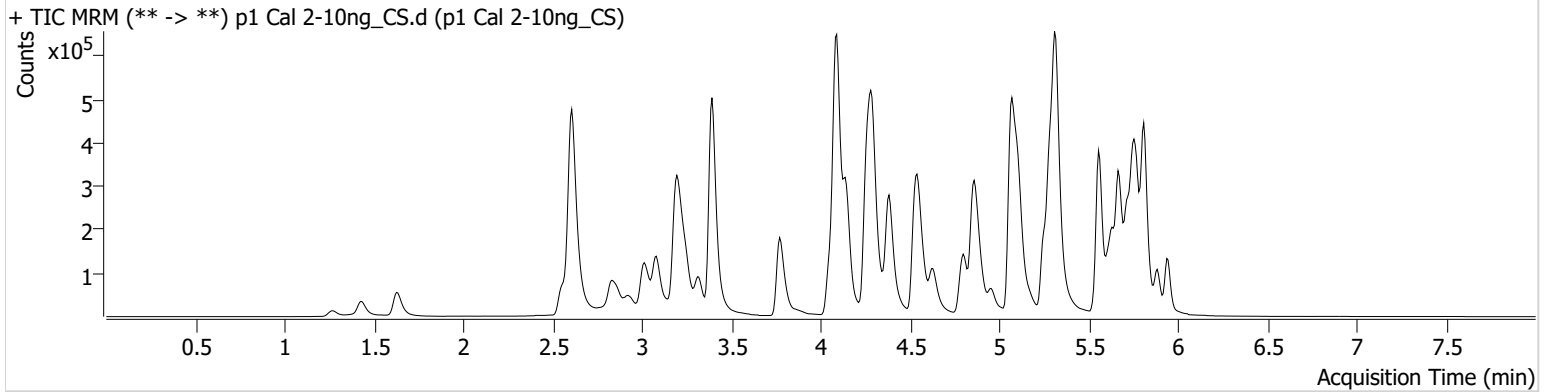
AM #28 Multi-Drug Quant. Results

Batch results D:\MassHunter\Data\2023\AM 27 28\102523 AM 27 28 TS CS\QuantResults\AM 28_CS Cases.batch.bin
Calibration Last Update 10/27/2023 11:36:07 AM

Instrument Falco (069901) **Data File** p1 Cal 2-10ng_CS.d
Type Cal **Sample** p1 Cal 2-10ng_CS
Acq. Method AM 28 MDQ P1.m **Operator** Celena Shrum
Sample Position P2-G12 **Comment**
Injection Volume 2
Acq. Date-Time 10/26/2023 12:12:32 AM
Sample Info.

Only drugs and concentrations listed on the laboratory report itself are appropriate to be used for interpretation purposes. Any drugs or values included in the notes but not included on the report are used by laboratory personnel to make determinations/reach conclusions within the confines of the methods.

Sample Chromatogram



Name	RT	Resp.	S/N	Ratio	S/N	ISTD Resp.	Final Conc.
a-hydroxyalprazolam	5.696	17798	96.11	78.6	638.95	91082	9.7445 ng/ml
Alprazolam	5.774	57121	239.41	125.8	420.15	265798	9.4243 ng/ml
Amphetamine	3.083	233228	2228.61	38.7	1128.08	163268	10.4881 ng/ml
Bupropion	4.813	107692	198.51	74.2	127.04	307008	9.6849 ng/ml
Diazepam	5.945	40568	179.15	89.5	1438.31	199004	10.0264 ng/ml
EDDP	5.283	92203	1860.64	48.7	680.20	598677	9.7212 ng/ml
Fentanyl	5.117	5368	32.25	94.9	2457.46	447468	0.9135 ng/ml
Fluorofentanyl	5.170	24121	191.50	35.5	1601.73	4759	1.0250 ng/ml
Fluoxetine	5.719	46194	47264.21	7.4	5705.27	162111	10.0188 ng/ml
Hydroxyzine	5.715	46387	1881.10	69.3	2812.58	276814	9.6595 ng/ml
Methadone	5.671	143380	953.85	40.4	10516.25	466034	9.5750 ng/ml
Methamphetamine	3.252	126244	747.81	39.6	517.75	858857	10.0483 ng/ml
Nordiazepam	5.892	37090	258.85	70.0	122.39	135698	9.7240 ng/ml
Norfentanyl	4.112	24577	138.14	31.2	41.50	942226	0.9590 ng/ml
Phentermine	3.807	29820	40.34	8.1	46.86	566354	10.1085 ng/ml

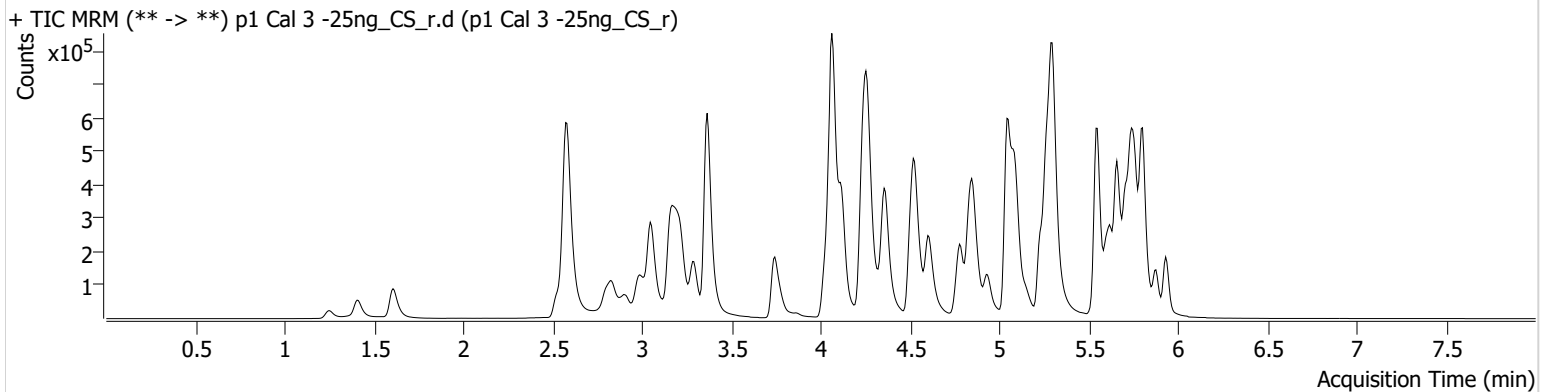


AM #28 Multi-Drug Quant. Results

Batch results D:\MassHunter\Data\2023\AM 27 28\102523 AM 27 28 TS CS\QuantResults\AM 28_CS Cases.batch.bin
Calibration Last Update 10/27/2023 11:36:07 AM

Instrument	Falco (069901)	Data File	p1 Cal 3 -25ng_CS_r.d
Type	Cal	Sample	p1 Cal 3 -25ng_CS_r
Acq. Method	AM 28 MDQ P1.m	Operator	Celena Shrum
Sample Position	P2-F12	Comment	Only drugs and concentrations listed on the laboratory report itself are appropriate to be used for interpretation purposes. Any drugs or values included in the notes but not included on the report are used by laboratory personnel to make determinations/reach conclusions within the confines of the methods.
Injection Volume	2		
Acq. Date-Time	10/26/2023 9:06:09 AM		
Sample Info.			

Sample Chromatogram



Name	RT	Resp.	S/N	Ratio	S/N	ISTD Resp.	Final Conc.
a-hydroxyalprazolam	5.683	40793	1180.34	85.1	203.55	86506	22.6987 ng/ml
Alprazolam	5.760	143423	444.54	128.3	1043.29	260145	22.7020 ng/ml
Amphetamine	3.049	547799	877.99	39.3	1269.13	161858	25.8552 ng/ml
Bupropion	4.786	267737	11596.33	71.8	4252.31	298994	24.8252 ng/ml
Diazepam	5.939	98292	283.34	89.6	468.99	193351	25.0044 ng/ml
EDDP	5.269	244783	4227.62	49.0	168.69	620966	24.2438 ng/ml
Fentanyl	5.096	13889	346.17	91.7	21983.23	438365	2.2860 ng/ml
Fluorofentanyl	5.150	58496	2359.41	36.7	16986.22	5029	2.3539 ng/ml
Fluoxetine	5.712	104368	2870.01	7.5	69.27	151907	23.9068 ng/ml
Hydroxyzine	5.702	117857	6987.37	71.8	98285.66	258516	25.4648 ng/ml
Methadone	5.657	362914	979.11	39.1	385.22	449503	23.8895 ng/ml
Methamphetamine	3.225	308068	2415.41	40.3	329.43	820330	26.5664 ng/ml
Nordiazepam	5.878	91097	1914.34	67.2	377.52	126286	25.7675 ng/ml
Norfentanyl	4.085	58529	44515.93	32.5	421.13	886311	2.3092 ng/ml
Phentermine	3.780	75473	236.50	7.2	85.19	558969	26.0690 ng/ml

Cal 3 was reinjected due to retention time shifting for some compounds/ISTDs.



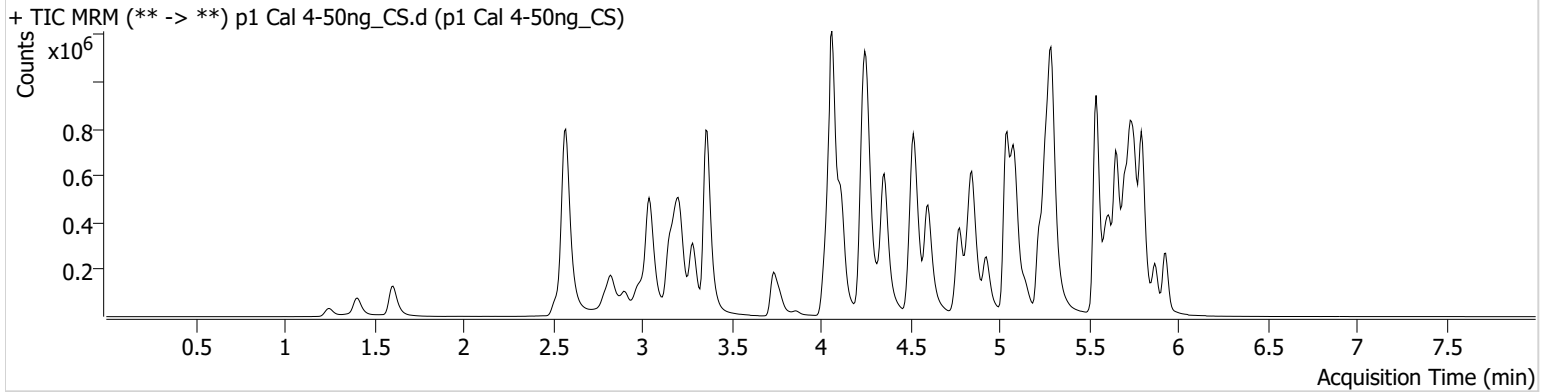
AM #28 Multi-Drug Quant. Results

Batch results D:\MassHunter\Data\2023\AM 27 28\102523 AM 27 28 TS CS\QuantResults\AM 28_CS Cases.batch.bin
Calibration Last Update 10/27/2023 11:36:07 AM

Instrument Falco (069901) **Data File** p1 Cal 4-50ng_CS.d
Type Cal **Sample** p1 Cal 4-50ng_CS
Acq. Method AM 28 MDQ P1.m **Operator** Celena Shrum
Sample Position P2-E12 **Comment**
Injection Volume 2
Acq. Date-Time 10/26/2023 12:44:40 AM
Sample Info.

Only drugs and concentrations listed on the laboratory report itself are appropriate to be used for interpretation purposes. Any drugs or values included in the notes but not included on the report are used by laboratory personnel to make determinations/reach conclusions within the confines of the methods.

Sample Chromatogram



Name	RT	Resp.	S/N	Ratio	S/N	ISTD Resp.	Final Conc.
a-hydroxyalprazolam	5.683	81070	289.38	79.9	304.01	77634	49.5620 ng/ml
Alprazolam	5.760	282066	432.76	126.2	2894.36	243052	46.7457 ng/ml
Amphetamine	3.043	1050584	545.17	40.0	7419.67	157582	51.6442 ng/ml
Bupropion	4.779	543194	696.23	71.8	321.76	300881	50.1168 ng/ml
Diazepam	5.932	200851	281.94	87.2	2132.87	196404	50.3011 ng/ml
EDDP	5.262	465937	4579.96	47.5	582.02	589683	48.1849 ng/ml
Fentanyl	5.089	29309	86.53	85.5	170.89	443066	4.6886 ng/ml
Fluorofentanyl	5.143	121962	670.77	35.6	766.59	5356	4.6091 ng/ml
Fluoxetine	5.705	236223	264294.35	7.1	8746.53	163805	49.9852 ng/ml
Hydroxyzine	5.702	229204	1711.32	73.5	134331.37	264589	47.9602 ng/ml
Methadone	5.657	726447	2287.41	39.7	476.75	453240	46.6751 ng/ml
Methamphetamine	3.218	610260	1756.87	39.9	1923.98	830245	52.5483 ng/ml
Nordiazepam	5.871	180758	1138.58	69.6	267.83	128461	50.3234 ng/ml
Norfentanyl	4.078	114961	2609.32	32.2	212.80	842161	4.6907 ng/ml
Phentermine	3.773	151751	362.16	7.1	244.69	555564	52.8334 ng/ml



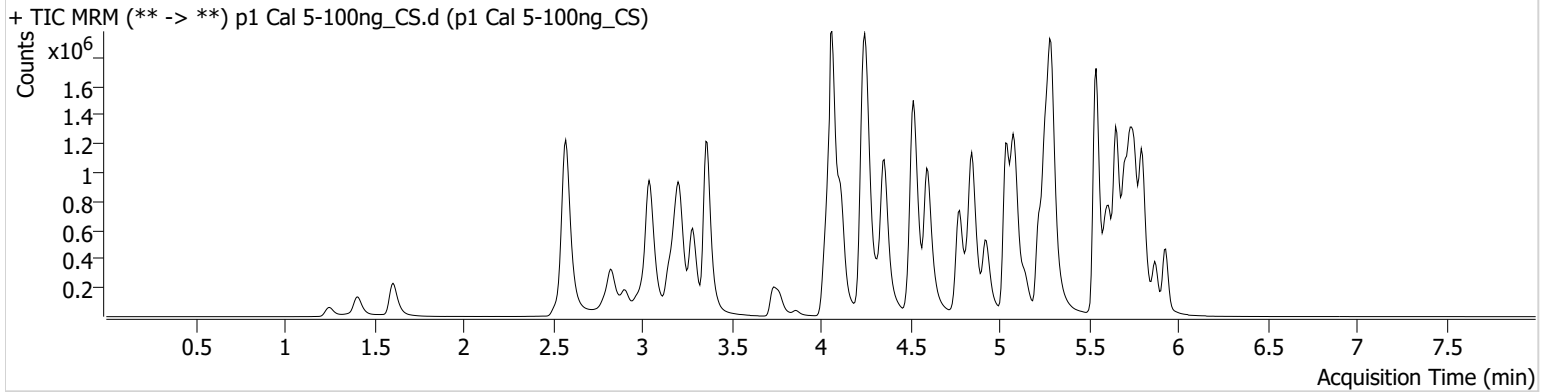
AM #28 Multi-Drug Quant. Results

Batch results D:\MassHunter\Data\2023\AM 27 28\102523 AM 27 28 TS CS\QuantResults\AM 28_CS Cases.batch.bin
Calibration Last Update 10/27/2023 11:36:07 AM

Instrument Falco (069901) **Data File** p1 Cal 5-100ng_CS.d
Type Cal **Sample** p1 Cal 5-100ng_CS
Acq. Method AM 28 MDQ P1.m **Operator** Celena Shrum
Sample Position P2-D12 **Comment**
Injection Volume 2
Acq. Date-Time 10/26/2023 12:55:35 AM
Sample Info.

Only drugs and concentrations listed on the laboratory report itself are appropriate to be used for interpretation purposes. Any drugs or values included in the notes but not included on the report are used by laboratory personnel to make determinations/reach conclusions within the confines of the methods.

Sample Chromatogram



Name	RT	Resp.	S/N	Ratio	S/N	ISTD Resp.	Final Conc.
a-hydroxyalprazolam	5.683	135701	176.84	89.3	263.42	71602	89.4788 ng/ml
Alprazolam	5.753	583530	1094.16	123.9	1435.22	233487	99.5807 ng/ml
Amphetamine	3.043	2227868	8866.24	37.4	354.13	164824	105.4599 ng/ml
Bupropion	4.779	1180489	44098.72	72.8	547.82	318490	102.9627 ng/ml
Diazepam	5.932	424258	6933.41	87.9	466.78	206874	100.8745 ng/ml
EDDP	5.262	1046546	6552.09	48.8	731.29	655267	96.9784 ng/ml
Fentanyl	5.089	63456	172.41	82.5	36102.86	459501	9.7039 ng/ml
Fluorofentanyl	5.143	274738	956.12	34.9	24748.97	5441	10.2229 ng/ml
Fluoxetine	5.705	485417	13678.53	6.6	19059.20	164971	101.8053 ng/ml
Hydroxyzine	5.702	500387	375859.50	77.9	221303.29	298011	92.5178 ng/ml
Methadone	5.657	1670870	37251.29	40.5	766.18	496512	97.1617 ng/ml
Methamphetamine	3.211	1290081	842.45	39.2	4664.50	869472	106.6606 ng/ml
Nordiazepam	5.871	371410	1142.59	68.8	562.72	129235	102.8481 ng/ml
Norfentanyl	4.078	220894	19223.52	33.9	356.34	795923	9.4566 ng/ml
Phentermine	3.773	317783	758.42	6.9	708.34	584546	105.2468 ng/ml



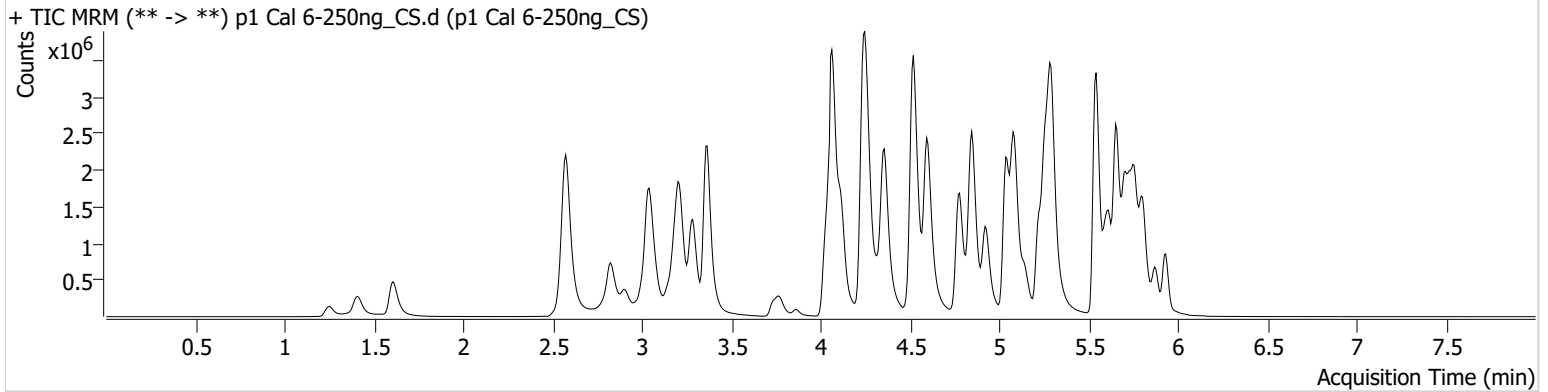
AM #28 Multi-Drug Quant. Results

Batch results D:\MassHunter\Data\2023\AM 27 28\102523 AM 27 28 TS CS\QuantResults\AM 28_CS Cases.batch.bin
Calibration Last Update 10/27/2023 11:36:07 AM

Instrument Falco (069901) **Data File** p1 Cal 6-250ng_CS.d
Type Cal **Sample** p1 Cal 6-250ng_CS
Acq. Method AM 28 MDQ P1.m **Operator** Celena Shrum
Sample Position P2-C12 **Comment**
Injection Volume 2
Acq. Date-Time 10/26/2023 1:06:13 AM
Sample Info.

Only drugs and concentrations listed on the laboratory report itself are appropriate to be used for interpretation purposes. Any drugs or values included in the notes but not included on the report are used by laboratory personnel to make determinations/reach conclusions within the confines of the methods.

Sample Chromatogram



Name	RT	Resp.	S/N	Ratio	S/N	ISTD Resp.	Final Conc.
a-hydroxyalprazolam	5.676	264796	205.23	88.5	5221.53	51561	241.4762 ng/ml
Alprazolam	5.753	1270789	1050.59	119.4	1091.16	190241	264.5830 ng/ml
Amphetamine	3.043	4453097	50929.07	38.2	5654.82	161416	216.0107 ng/ml
Bupropion	4.779	2885643	248706.48	72.4	823.65	320162	250.4668 ng/ml
Diazepam	5.932	925124	349.06	87.2	7783.19	178454	254.9951 ng/ml
EDDP	5.256	2467374	917.77	47.8	453.33	598547	249.6599 ng/ml
Fentanyl	5.089	150335	632.68	78.0	71362.05	406392	25.8643 ng/ml
Fluorofentanyl	5.143	669937	14528.90	35.5	42387.01	5448	24.8976 ng/ml
Fluoxetine	5.705	912879	643.81	7.0	81789.92	125035	252.3447 ng/ml
Hydroxyzine	5.695	1107592	2049.93	83.3	49848.90	255397	238.2053 ng/ml
Methadone	5.650	3892093	164126.52	39.4	28814.38	447935	249.6654 ng/ml
Methamphetamine	3.211	3122269	2676.84	38.4	766.68	873239	257.8385 ng/ml
Nordiazepam	5.878	752833	1326.03	70.4	307.83	110024	244.9561 ng/ml
Norfentanyl	4.078	447225	39651.75	34.5	8309.73	615991	24.6132 ng/ml
Phentermine	3.773	707216	183.39	6.5	84.65	560807	244.2621 ng/ml



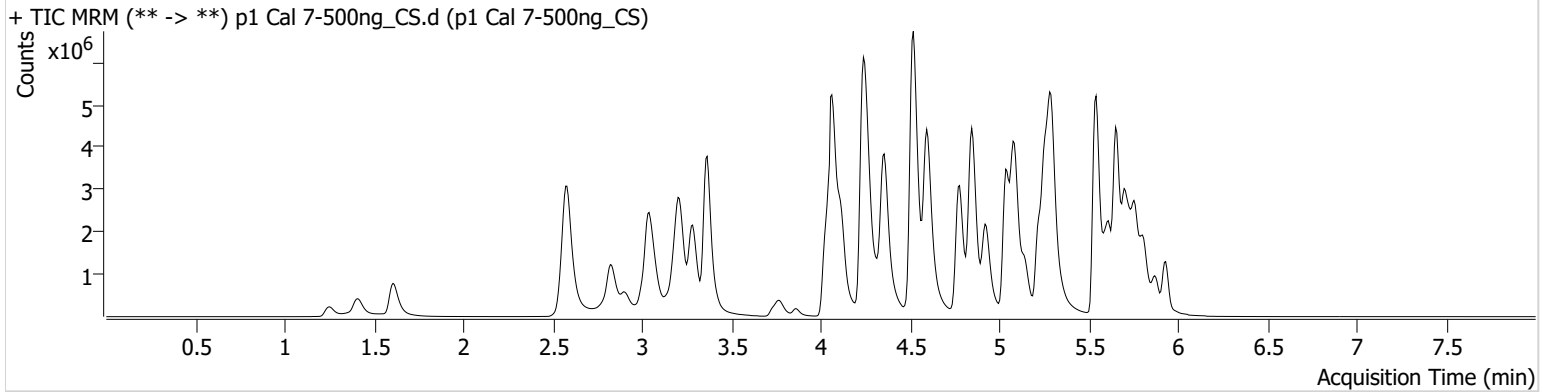
AM #28 Multi-Drug Quant. Results

Batch results D:\MassHunter\Data\2023\AM 27 28\102523 AM 27 28 TS CS\QuantResults\AM 28_CS Cases.batch.bin
Calibration Last Update 10/27/2023 11:36:07 AM

Instrument Falco (069901) **Data File** p1 Cal 7-500ng_CS.d
Type Cal **Sample** p1 Cal 7-500ng_CS
Acq. Method AM 28 MDQ P1.m **Operator** Celena Shrum
Sample Position P2-B12 **Comment**
Injection Volume 2
Acq. Date-Time 10/26/2023 1:16:50 AM
Sample Info.

Only drugs and concentrations listed on the laboratory report itself are appropriate to be used for interpretation purposes. Any drugs or values included in the notes but not included on the report are used by laboratory personnel to make determinations/reach conclusions within the confines of the methods.

Sample Chromatogram



Name	RT	Resp.	S/N	Ratio	S/N	ISTD Resp.	Final Conc.
a-hydroxyalprazolam	5.676	372185	327.61	79.4	378.01	30623	570.6923 ng/ml
Alprazolam	5.760	1960854	684.33	116.6	1852.77	144072	538.1084 ng/ml
Amphetamine	3.043	6501240	9942.29	38.3	5817.06	143027	356.3838 ng/ml
Bupropion	4.779	5548532	123813.55	71.4	69000.72	303552	508.0195 ng/ml
Diazepam	5.932	1545281	∞	88.3	13947.56	152732	497.6664 ng/ml
EDDP	5.256	4813042	35741.21	46.5	29248.83	566882	513.7743 ng/ml
Fentanyl	5.089	284265	117318.71	75.6	197162.13	341032	58.1824 ng/ml
Fluorofentanyl	5.143	1350532	16348.47	35.6	26484.66	5275	51.8413 ng/ml
Fluoxetine	5.705	1338268	140359.87	6.9	57947.60	91536	505.1388 ng/ml
Hydroxyzine	5.695	1974185	198593.23	87.4	750.18	211712	511.6432 ng/ml
Methadone	5.650	7420318	2895.86	38.1	1142.31	402979	528.2381 ng/ml
Methamphetamine	3.211	5580194	1069.00	37.6	4139.57	839643	479.7476 ng/ml
Nordiazepam	5.878	1149573	712.10	69.6	936.46	83402	493.5113 ng/ml
Norfentanyl	4.078	625402	8072.33	34.8	2736.47	396816	53.3395 ng/ml
Phentermine	3.773	1178849	1570.41	6.1	149.37	518550	440.4126 ng/ml



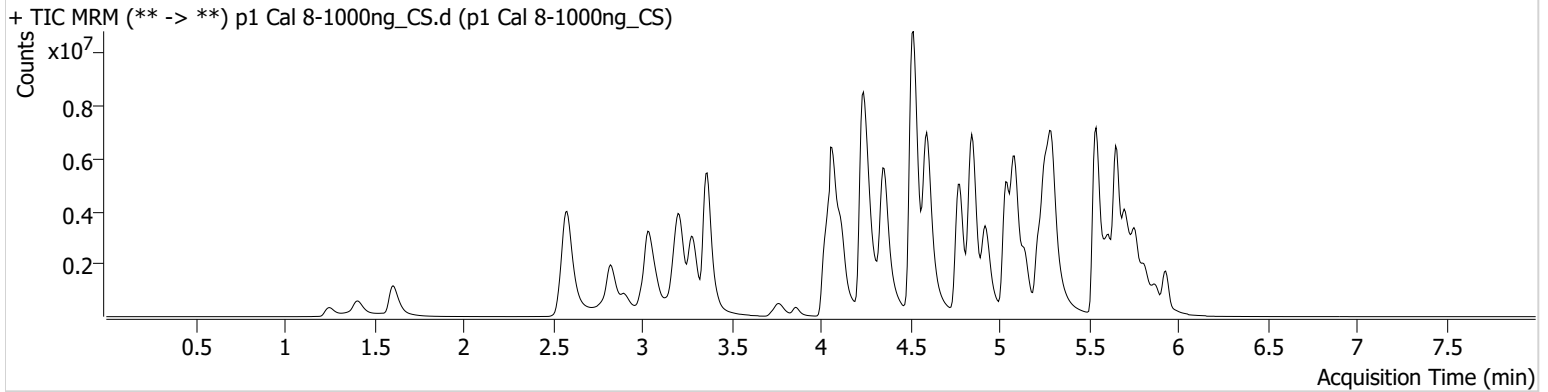
AM #28 Multi-Drug Quant. Results

Batch results D:\MassHunter\Data\2023\AM 27 28\102523 AM 27 28 TS CS\QuantResults\AM 28_CS Cases.batch.bin
Calibration Last Update 10/27/2023 11:36:07 AM

Instrument Falco (069901) **Data File** p1 Cal 8-1000ng_CS.d
Type Cal **Sample** p1 Cal 8-1000ng_CS
Acq. Method AM 28 MDQ P1.m **Operator** Celena Shrum
Sample Position P2-A12 **Comment**
Injection Volume 2
Acq. Date-Time 10/26/2023 1:27:26 AM
Sample Info.

Only drugs and concentrations listed on the laboratory report itself are appropriate to be used for interpretation purposes. Any drugs or values included in the notes but not included on the report are used by laboratory personnel to make determinations/reach conclusions within the confines of the methods.

Sample Chromatogram



Name	RT	Resp.	S/N	Ratio	S/N	ISTD Resp.	Final Conc.
a-hydroxyalprazolam	5.676	393915	218.03	79.8	271.77	16990	1088.1347 ng/ml
Alprazolam	5.760	2660717	∞	113.2	611.87	101808	1032.4266 ng/ml
Amphetamine	3.043	8867716	75907.61	38.4	46450.99	121398	573.1634 ng/ml
Bupropion	4.779	9545963	2390.55	70.4	2381.03	272616	973.2607 ng/ml
Diazepam	5.932	2299347	5113.18	86.6	62682.46	116634	969.7022 ng/ml
EDDP	5.256	8541237	96703.05	45.6	1162.29	481065	1073.9463 ng/ml
Fentanyl	5.089	456856	12933.71	76.6	372892.02	252565	126.1703 ng/ml
Fluorofentanyl	5.143	2509772	44082.89	35.0	7879.18	4834	105.1253 ng/ml
Fluoxetine	5.705	1599173	788.17	7.2	433911.59	55366	997.7775 ng/ml
Hydroxyzine	5.695	2977885	19872.01	89.7	184650.11	144038	1133.7992 ng/ml
Methadone	5.650	11875956	5029.44	37.4	2108.47	312486	1089.4448 ng/ml
Methamphetamine	3.211	9041490	52547.24	36.1	16451.54	771044	846.9239 ng/ml
Nordiazepam	5.878	1508726	7925.23	69.5	12022.49	54627	988.9287 ng/ml
Norfentanyl	4.078	727902	12059.57	35.4	2959.07	216198	113.8579 ng/ml
Phentermine	3.767	1815233	∞	5.9	219.77	446936	786.8999 ng/ml